

HALLIBURTON

ARRAY INDUCTION

COMPANY	KEBO OIL & GAS, INC		
WELL	DIAMONDBACK 1		
FIELD/BLOCK	WILDCAT		
COUNTY	BRAZORIA		
STATE	TX		
COMPANY	KEBO OIL & GAS, INC	WELL	DIAMONDBACK 1
FIELD/BLOCK	WILDCAT	COUNTY	BRAZORIA
STATE	TX	Other Services:	NONE
API No.	42-039-33361	Location	2730' FEL & 3510' FSL PERRY, J F / AUSTIN, E M SURVEY ABSTRACT 106
Permanent Datum	GL	Elev. 4.0 ft	21.0 ft
Log measured from	KB	Elev. K.B.	D.F.
Drilling measured from	KB	17.0 ft above perm. Datum	20.0 ft
Date	10-Jul-21		4.0 ft

Run No.	TWO
Depth - Driller	10450.0 ft
Depth - Logger	10454.0 ft
Bottom - Logged Interval	10444.0 ft
Top - Logged Interval	8116.0 ft
Casing - Driller	9.625 in @ 8112.0 ft
Casing - Logger	8116.0 ft @
Bit Size	8.500 in @
Type Fluid in Hole	Oil Based
Density	15.40 g/cc
F. Viscosity	55.00 s/qt
Alkalinity	1.70 pcf
P. Viscosity	34.0 cP
HTHP @ Meas. Temperature	6.0 cP @ 250.00 degF
Solids	Wgt. Material
Oil	Water Ratio
Water Phase Salinity	238385.00 ppm Cl-
Oil Type	Brine Type
Electrical Stability	463 V
Time Since Circulation	08:44 hr
Time on Bottom	10-Jul-21 07:37
Max. Rec. Temperature	210.00 degF @ 10454.0 ft
Equipment	Location
Recorded By	MOHAMED ABUELGASIM
Witnessed By	P. HABERMAS (EMAIL)

Fold here

Sales Order Number: 907254210 API No.: 42-039-33361 PGM Version: WL INSITE R6.4.10 (Build 2)

CHANGE IN MUD TYPE OR ADDITIONAL SAMPLE				RESISTIVITY SCALE CHANGES			
Date	Sample No.			Type Log	Depth	Scale Up Hole	Scale Down Hole
Depth-Driller							
Type Fluid in Hole							
Density	F. Viscosity						
Alkalinity	P. Viscosity						
HTHP @ Meas. Temp.				RESISTIVITY EQUIPMENT DATA			
Solids	Wgt. Mat.			Run No.	Tool Type & No.	Pad Type	Tool Pos.
Oil	Water Ratio			TWO	ACRT	NONE	1.5" S.O.
Water Phase Salinity					S-10933411		
Oil Type	Water Type						
Electrical Stability							

EQUIPMENT DATA							
GAMMA		ACOUSTIC		DENSITY		NEUTRON	
Run No.	TWO	Run No.		Run No.		Run No.	
Serial No.	10965404	Serial No.		Serial No.		Serial No.	
Model No.	GTET	Model No.		Model No.		Model No.	
Diameter	3.625"	No. of Cent.		Diameter		Diameter	
Detector Model No.	GTET	Spacing		Log Type		Log Type	
Type	SCINT			Source Type		Source Type	
Length	8"	LSA [Y/N]		Serial No.		Serial No.	
Distance to Source	N/A	FWDA [Y/N]		Strength		Strength	

LOGGING DATA

GENERAL			GAMMA		ACOUSTIC			DENSITY			NEUTRON			
Run	Depth		Speed	Scale		Scale		Matrix	Scale		Matrix	Scale		Matrix
No.	From	To	ft/min	L	R	L	R		L	R		L	R	
TWO	10454'	8116'	REC	0gapi	150gapi									

DIRECTIONAL INFORMATION

Maximum Deviation	@	KOP	@
-------------------	---	-----	---

Remarks: SCALES AND PRESENTATION ARE AS PER CUSTOMER REQUEST
 LOGGING INTERVALS AND SERVICES ARE AS PER CUSTOMER REQUEST
 TOOLS RAN IN COMBINATION AS PER TOOLSTRING DIAGRAM

RIG: LAUSON DRILLING #2

CREW: C. HERRERA, B. EZEKWU

THANK YOU FOR CHOOSING HALLIBURTON ENERGY SERVICES

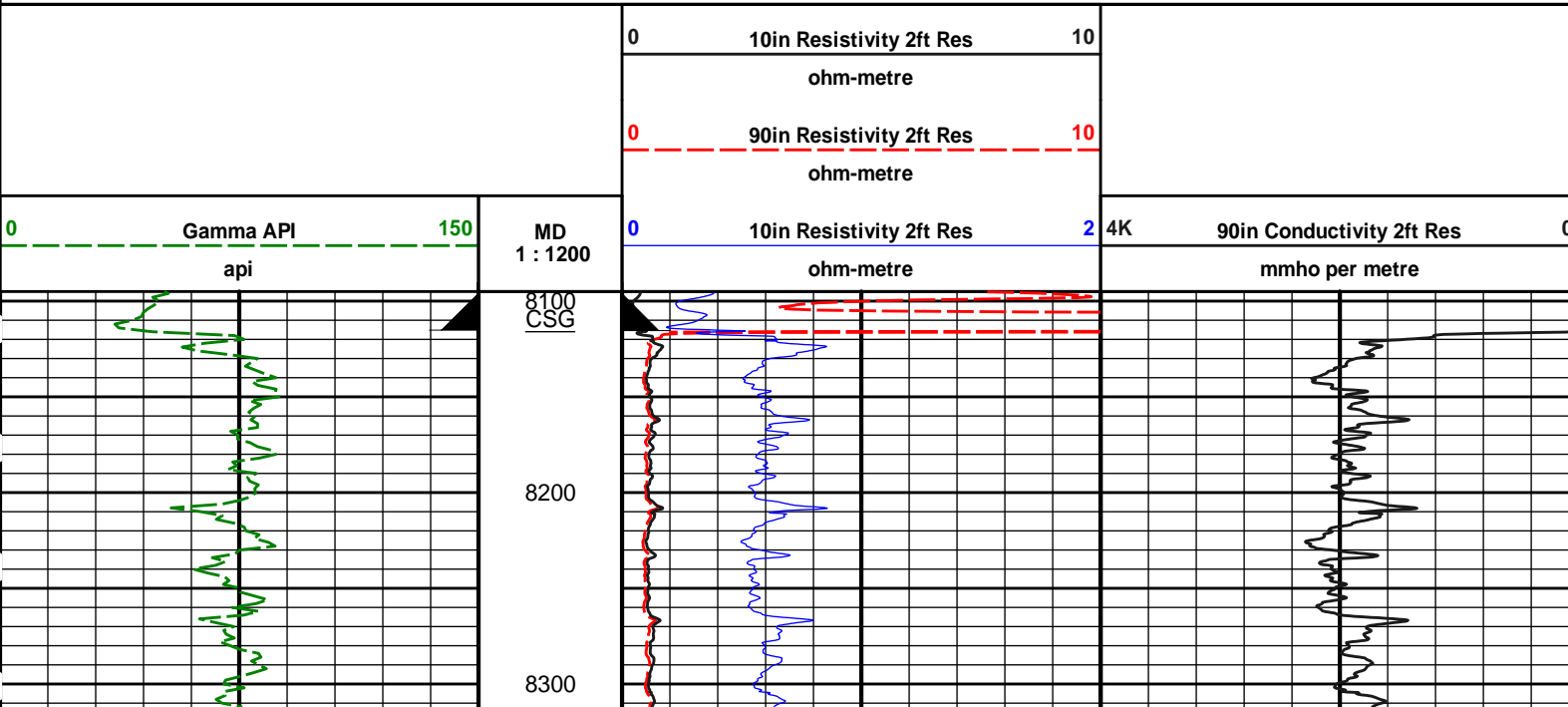
HALLIBURTON DOES NOT GUARANTEE THE ACCURACY OF ANY INTERPRETATION OF THE LOG DATA, CONVERSION OF LOG DATA TO PHYSICAL ROCK PARAMETERS OR RECOMMENDATIONS WHICH MAY BE GIVEN BY HALLIBURTON PERSONNEL OR WHICH APPEAR ON THE LOG OR IN ANY OTHER FORM. ANY USER OF SUCH DATA, INTERPRETATIONS, CONVERSIONS, OR RECOMMENDATIONS AGREES THAT HALLIBURTON IS NOT RESPONSIBLE EXCEPT WHERE DUE TO GROSS NEGLIGENCE OR WILLFUL MISCONDUCT, FOR ANY LOSS, DAMAGES, OR EXPENSES RESULTING FROM THE USE THEREOF.

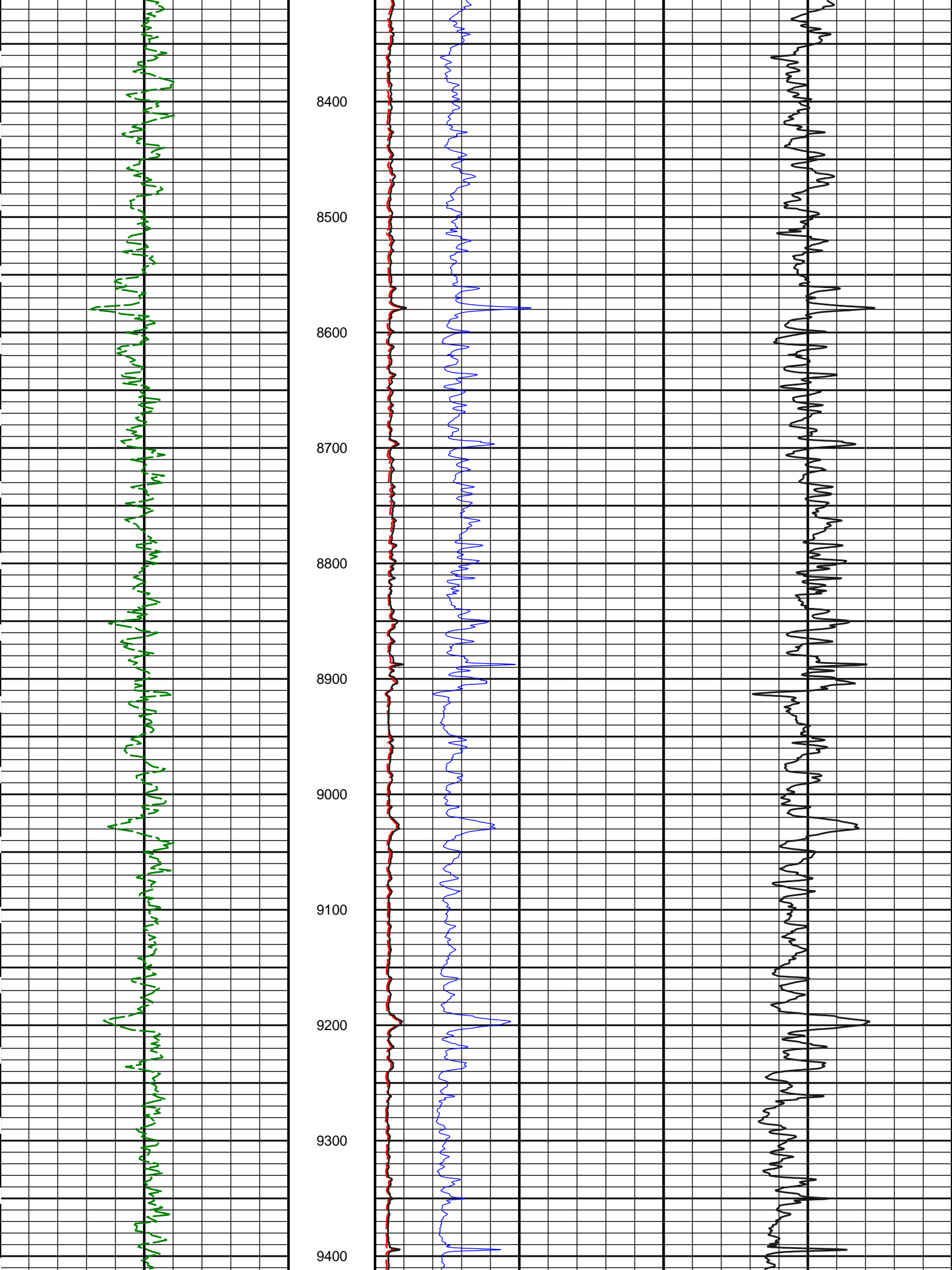
HALLIBURTON

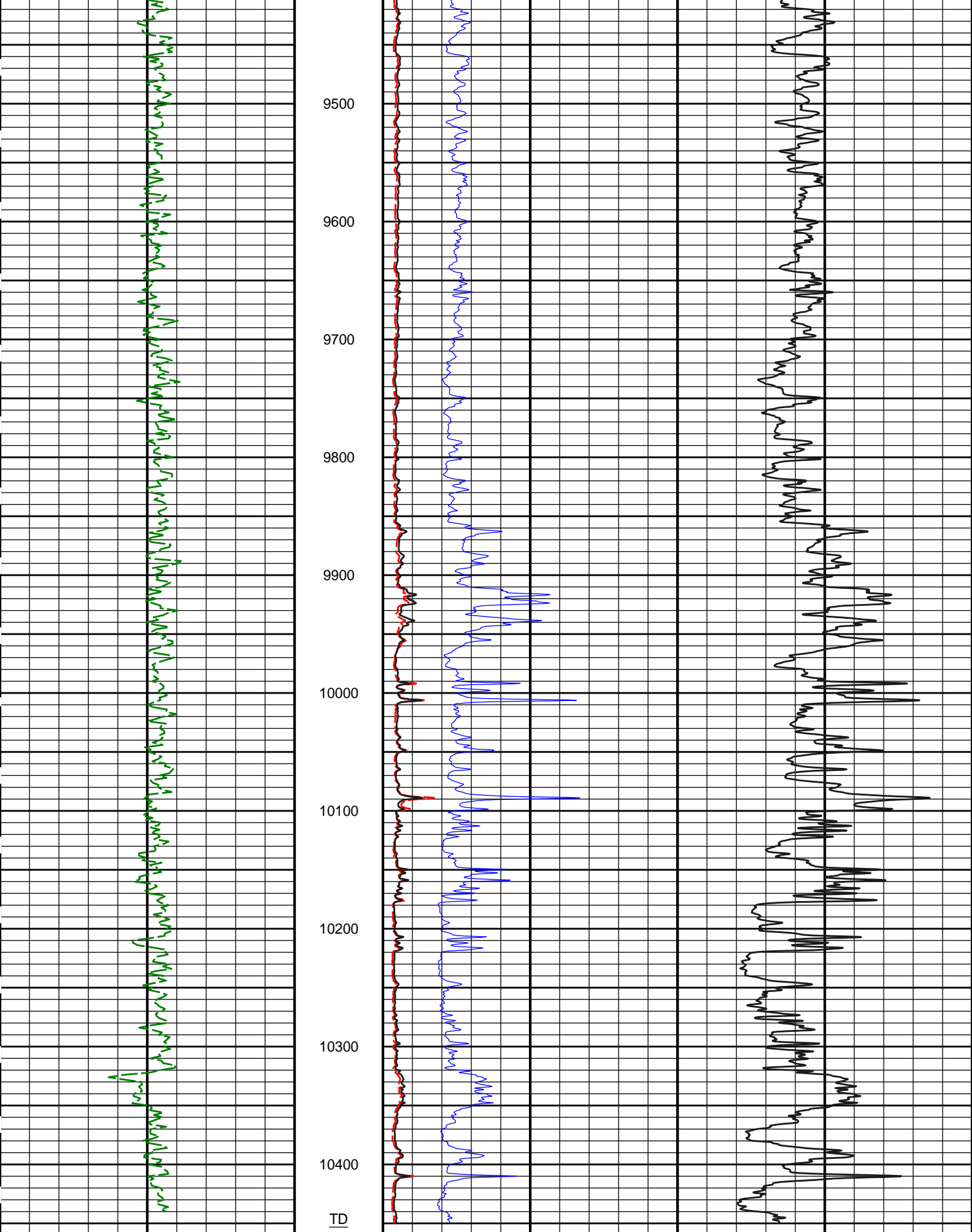


Plot Time: 10-Jul-21 08:57:01
 Plot Range: 8095 ft to 10461.5 ft
 Data: 07_10_KEBO\Well Based\DAQ-0001-003\
 Plot File: \\-LOCAL-107_10_KEBO0001 RWCH-GTET-ACRT\ACRT1_INCH

MAIN SECTION 1" = 100'







0	Gamma API	150
api		
MD	10in Resistivity 2ft Res	2 4K
1 : 1200		
ohm-metre		
0	90in Conductivity 2ft Res	0
mmho per metre		

0	90in Resistivity 2ft Res	10
	ohm-metre	
0	10in Resistivity 2ft Res	10
	ohm-metre	

HALLIBURTON

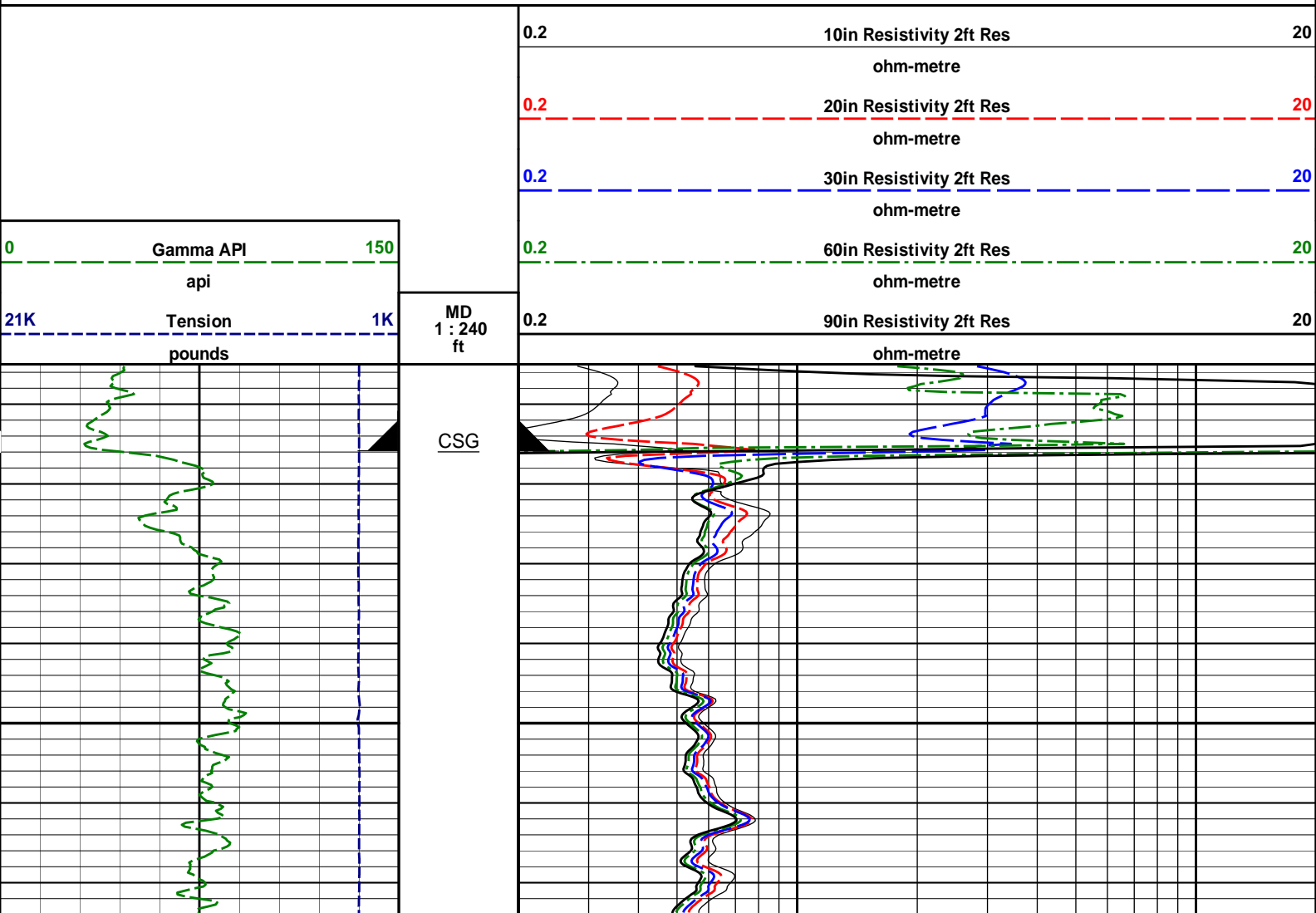
Plot Time: 10-Jul-21 08:57:02
 Plot Range: 8095 ft to 10461.5 ft
 Data: 07_10_KEBO\Well Based\DAQ-0001-003\
 Plot File: \\-LOCAL-107_10_KEBO0001 RWCH-GTET-ACRT\ACRT1_INCH

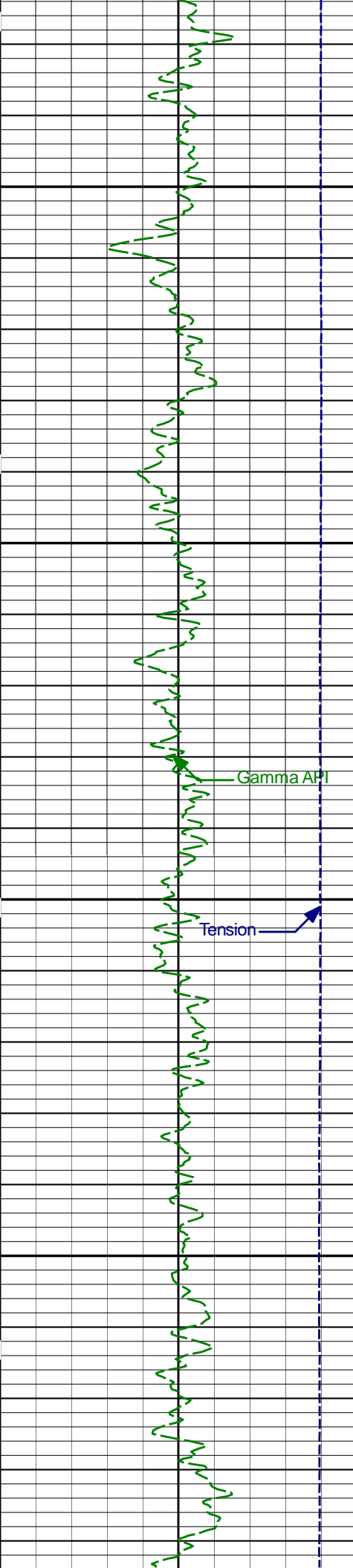
MAIN SECTION 1" = 100'

HALLIBURTON

Plot Time: 10-Jul-21 08:57:03
 Plot Range: 8105 ft to 10461.5 ft
 Data: 07_10_KEBO\Well Based\DAQ-0001-003\
 Plot File: \\ACRT\5_INCH

MAIN SECTION 5" = 100'





8200

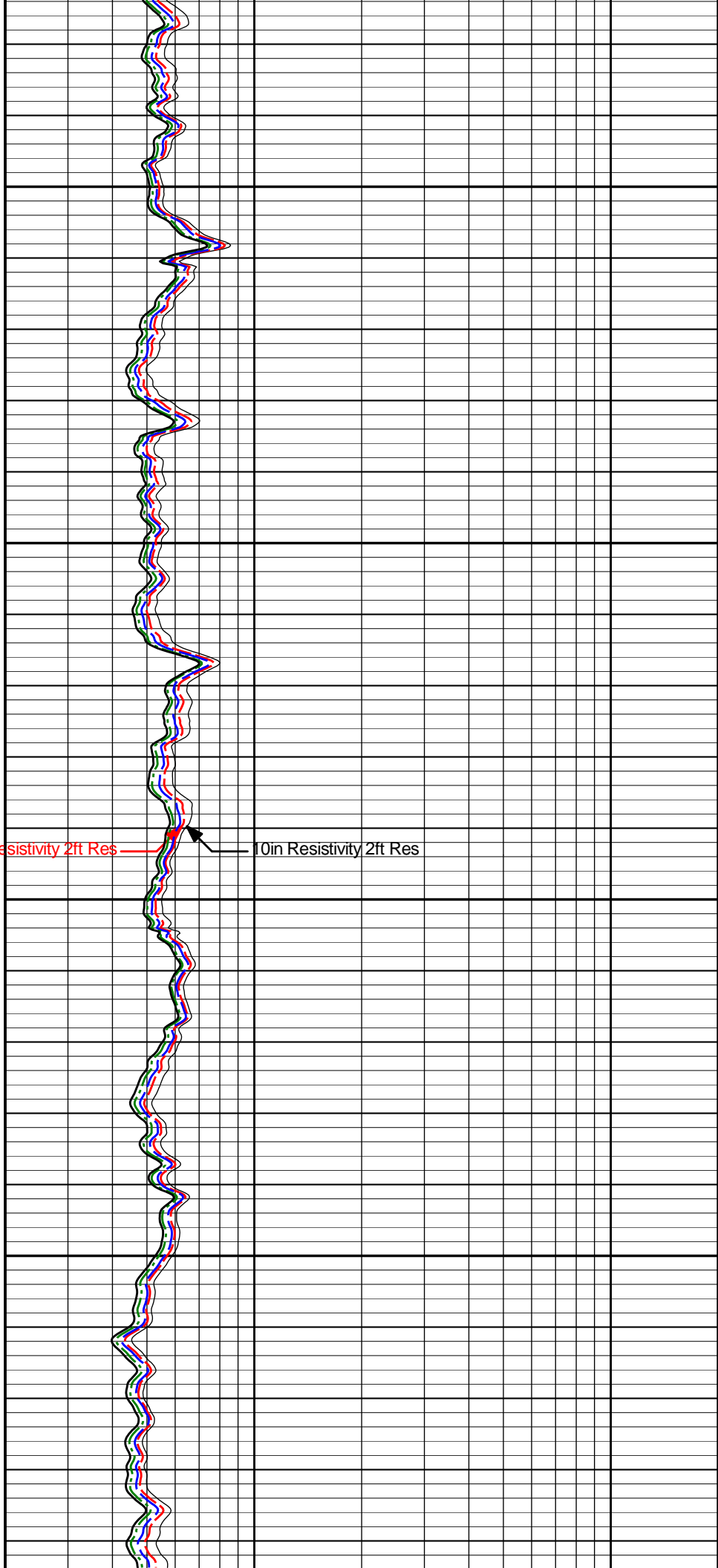
Gamma API

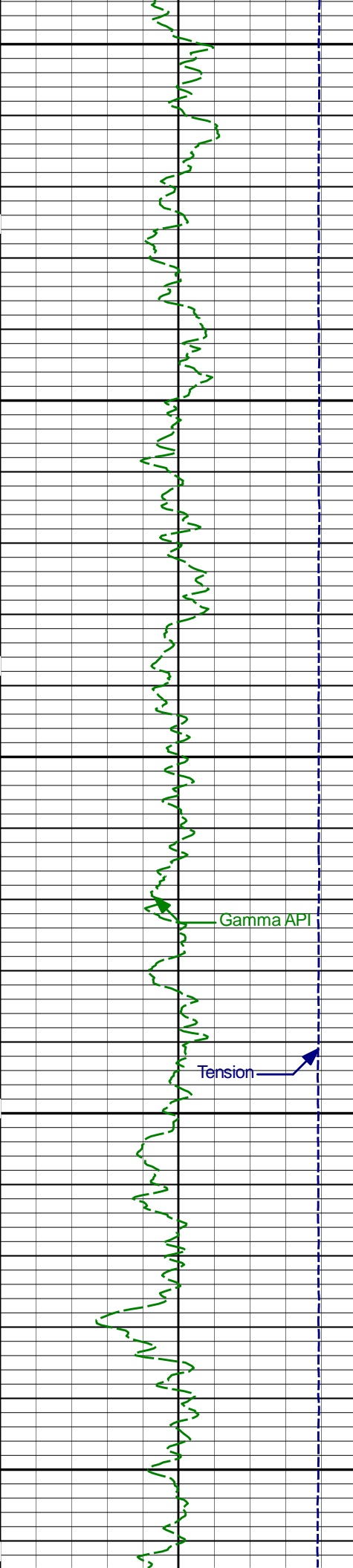
Tension

8300

20in Resistivity 2ft Res

10in Resistivity 2ft Res





8400

8500

8600

Gamma API

Tension

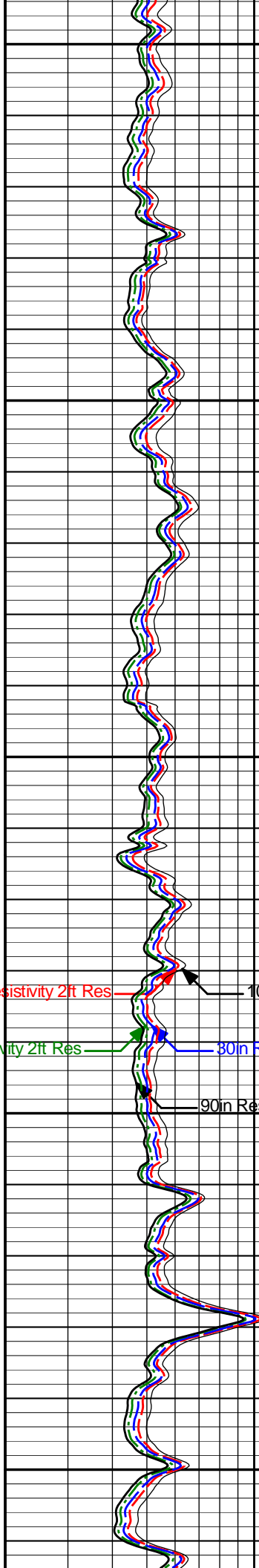
20in Resistivity 2ft Res

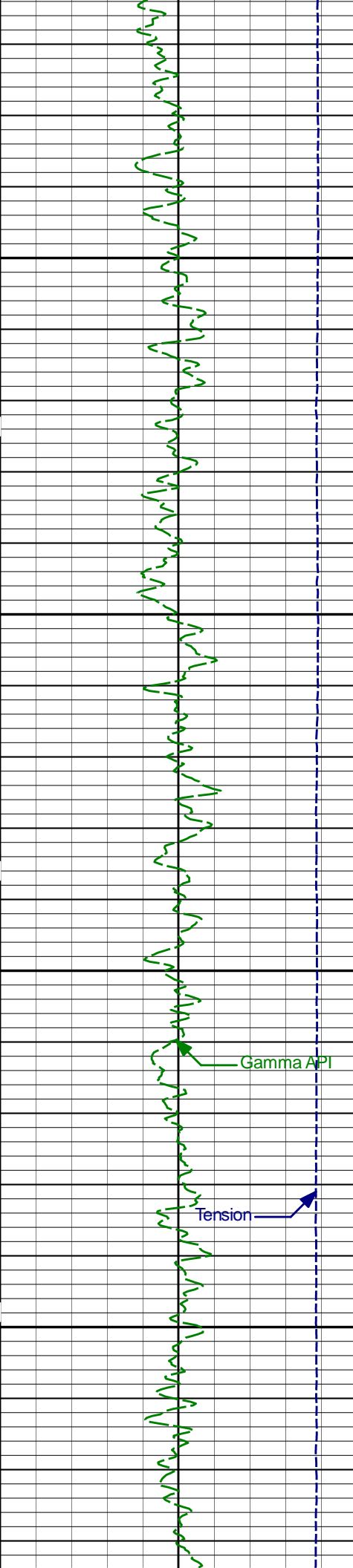
60in Resistivity 2ft Res

10in Resistivity 2ft Res

30in Resistivity 2ft Res

90in Resistivity 2ft Res

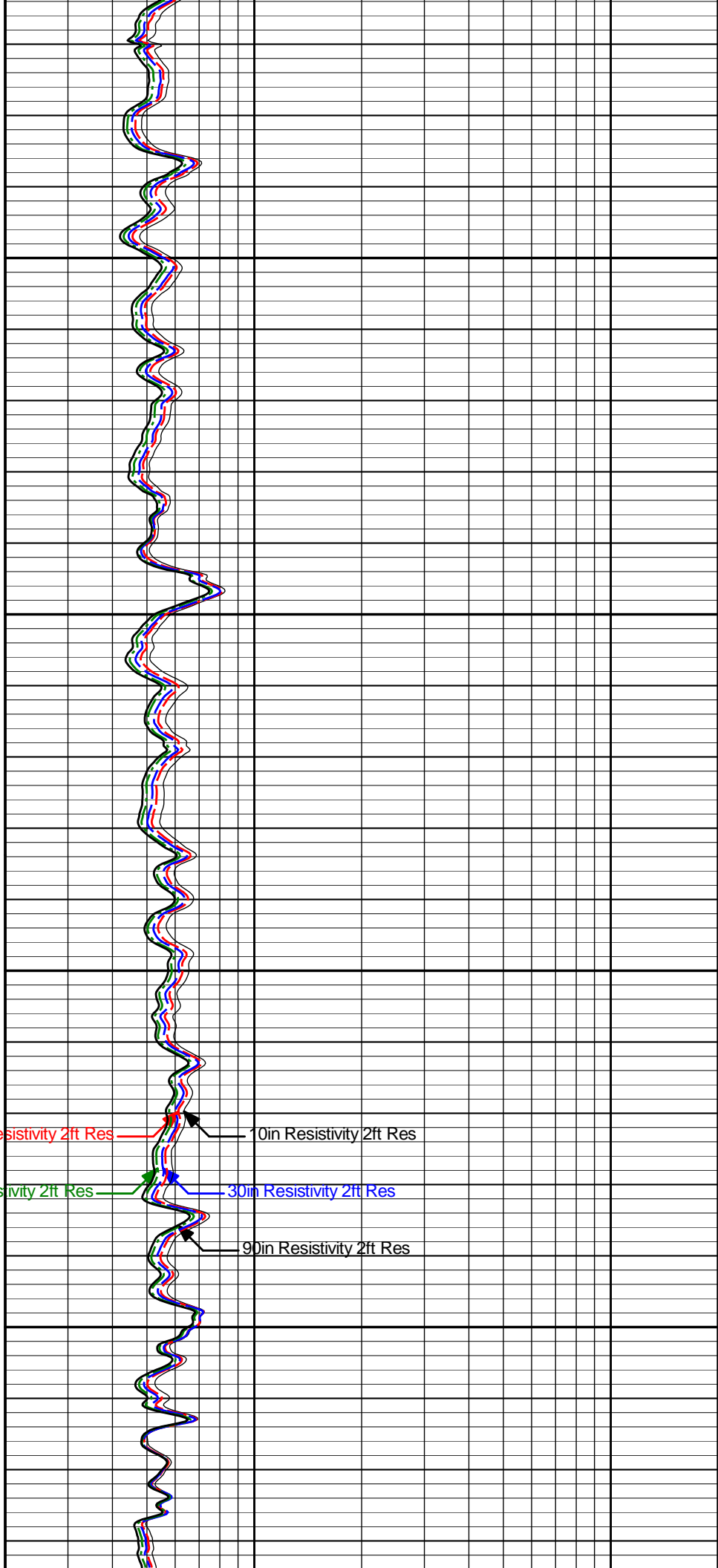


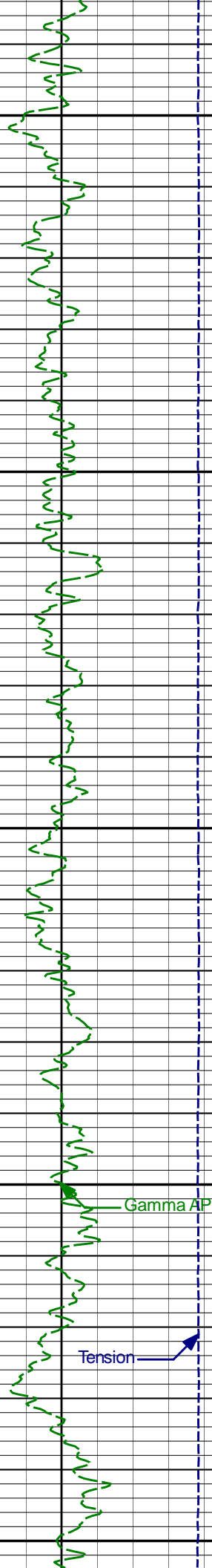


8700

8800

20in Resistivity 2ft Res
60in Resistivity 2ft Res
10in Resistivity 2ft Res
30in Resistivity 2ft Res
90in Resistivity 2ft Res





8900

9000

Gamma API

Tension

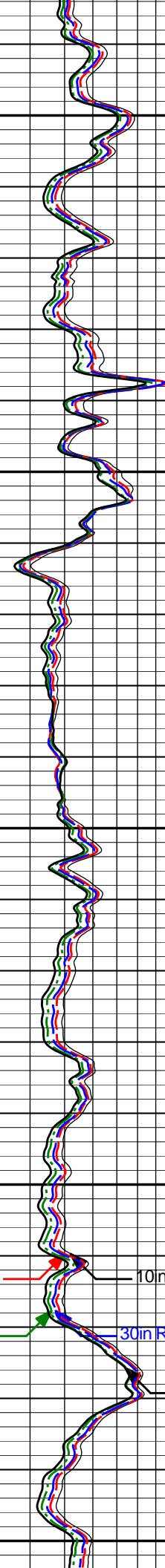
20in Resistivity 2ft Res

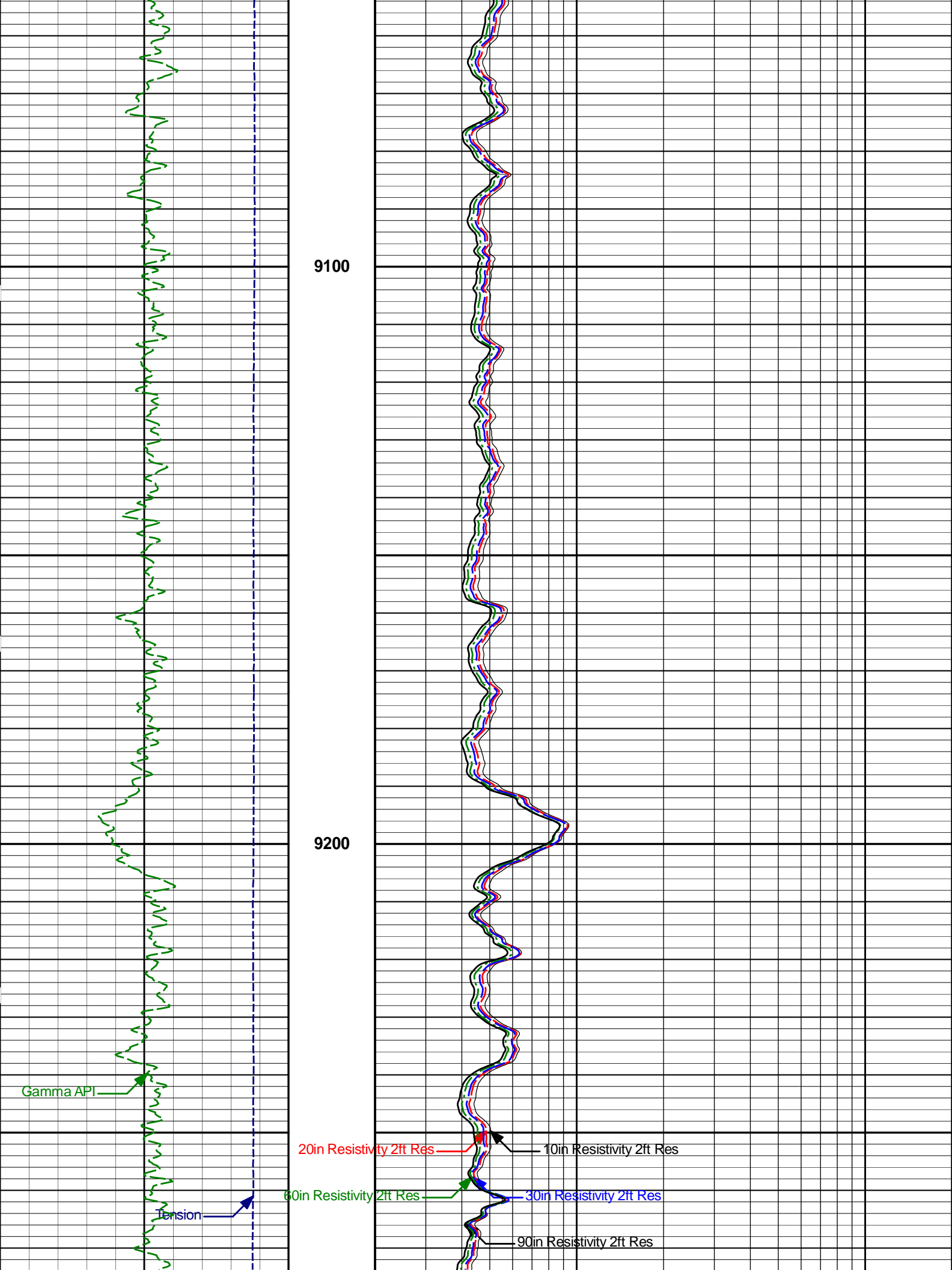
60in Resistivity 2ft Res

10in Resistivity 2ft Res

30in Resistivity 2ft Res

90in Resistivity 2ft Res





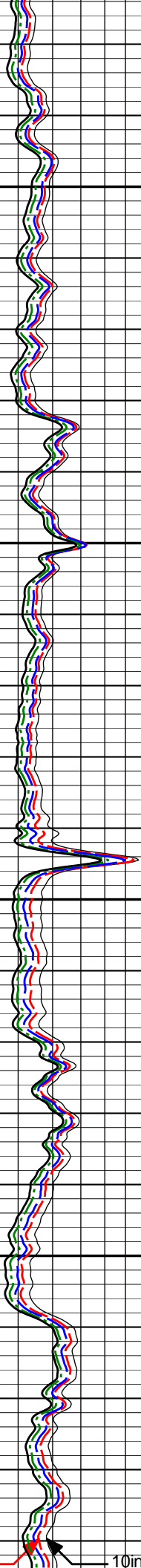
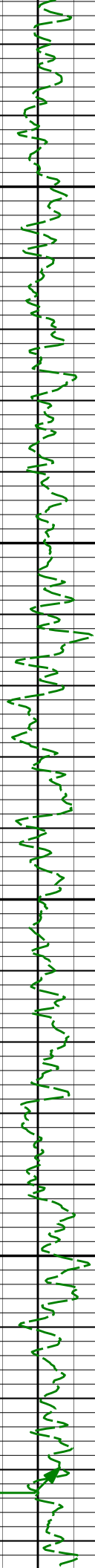
9300

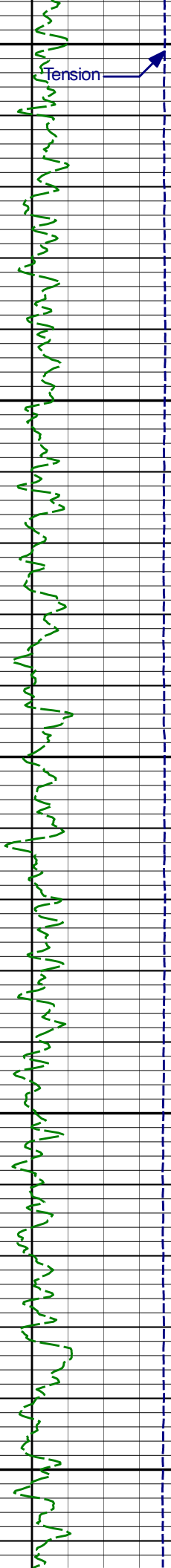
9400

Gamma API

20in Resistivity 2ft Res

10in Resistivity 2ft Res





9500

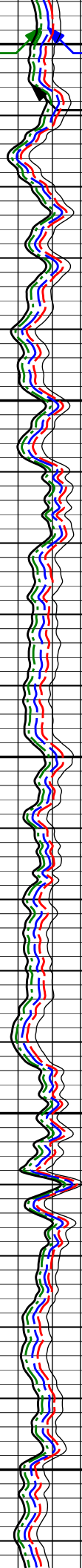
60in Resistivity 2ft Res

30in Resistivity 2ft Res

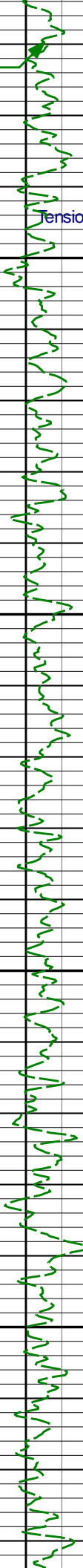
90in Resistivity 2ft Res

9600

9700



Gamma API



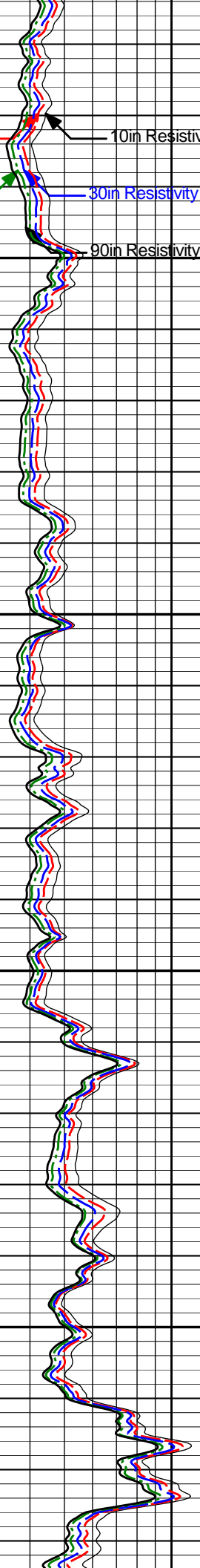
ension

60in Resistivity 2ft Res

20in Resistivity 2ft Res

9800

9900



30in Resistivity 2ft Res

10in Resistivity 2ft Res

90in Resistivity 2ft Res

Gamma API

Tension

20in Resistivity 2ft Res

60in Resistivity 2ft Res

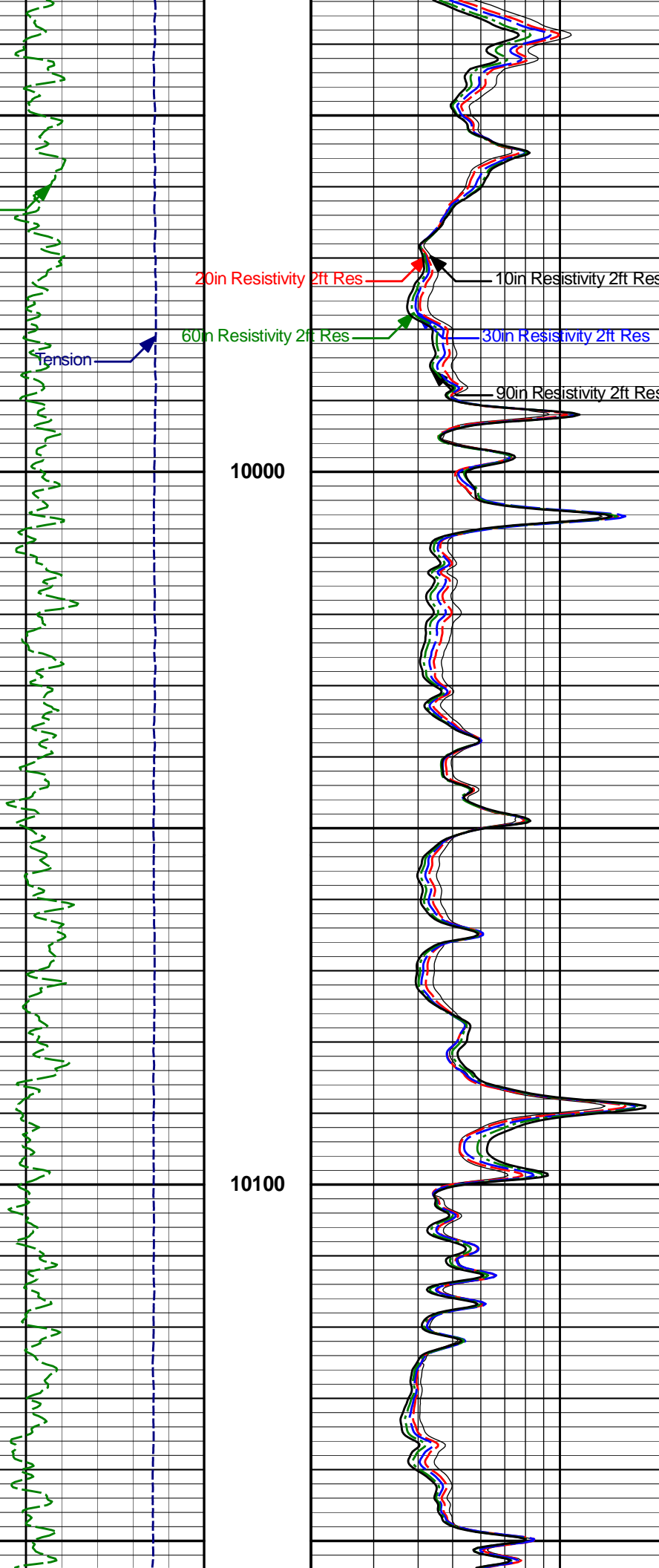
10in Resistivity 2ft Res

30in Resistivity 2ft Res

90in Resistivity 2ft Res

10000

10100



Gamma API

Pressure

10200

10300

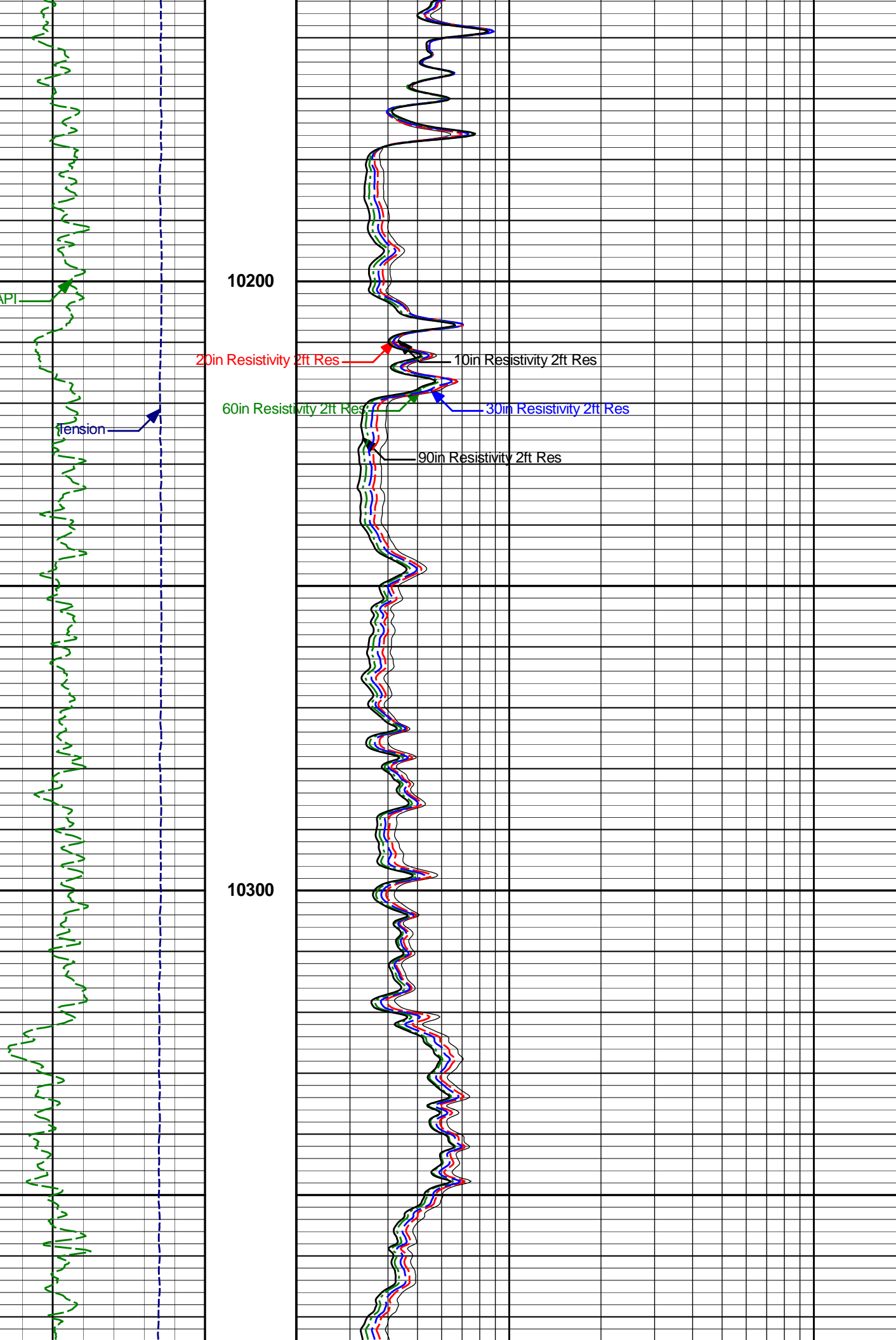
20in Resistivity 2ft Res

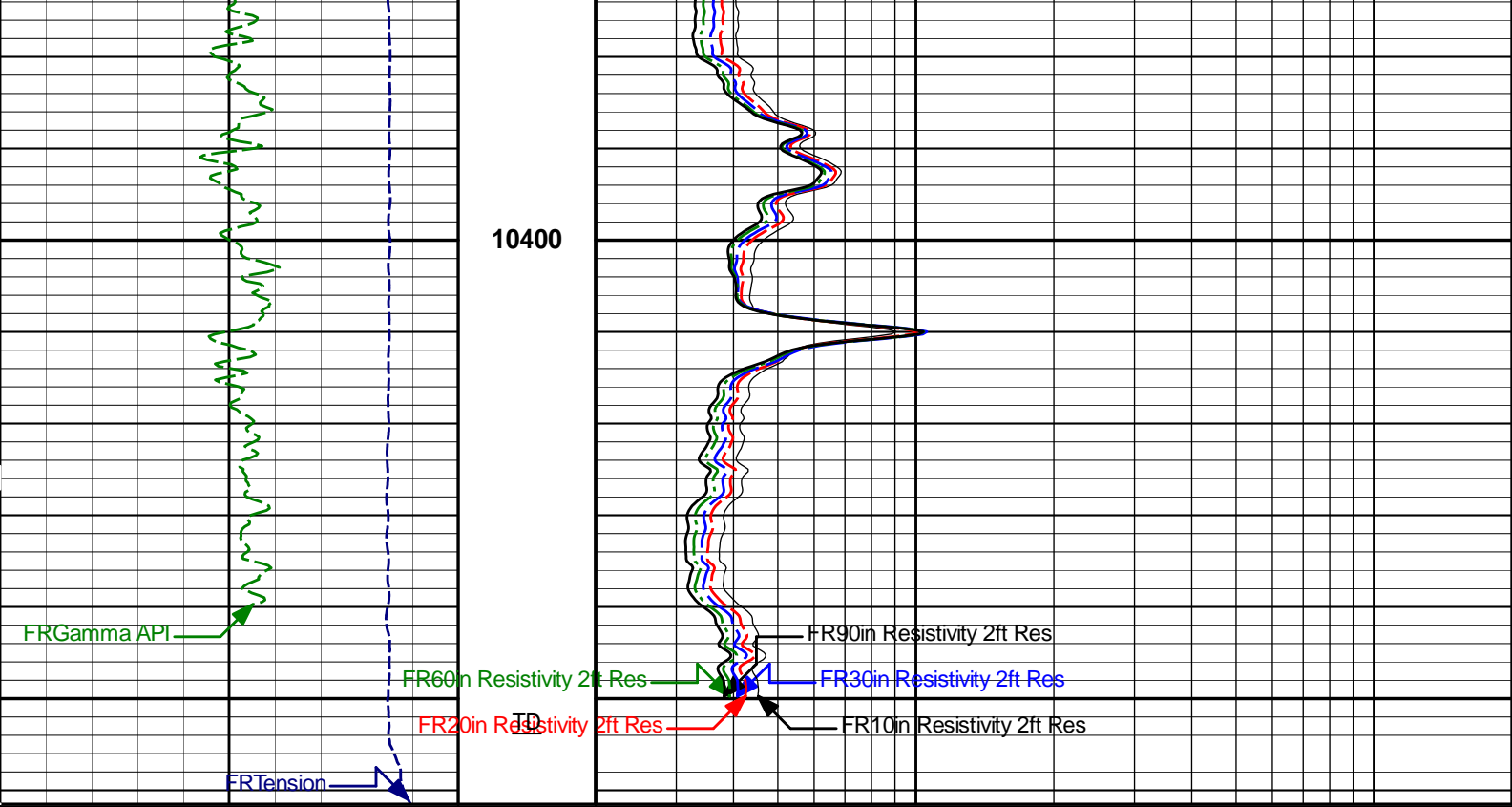
10in Resistivity 2ft Res

60in Resistivity 2ft Res

30in Resistivity 2ft Res

90in Resistivity 2ft Res





21K	Tension	1K	MD 1 : 240 ft	0.2	90in Resistivity 2ft Res	20
	pounds				ohm-metre	
0	Gamma API	150		0.2	60in Resistivity 2ft Res	20
	api				ohm-metre	
				0.2	30in Resistivity 2ft Res	20
					ohm-metre	
				0.2	20in Resistivity 2ft Res	20
					ohm-metre	
				0.2	10in Resistivity 2ft Res	20
					ohm-metre	

HALLIBURTON Plot Time: 10-Jul-21 08:57:05
 Plot Range: 8105 ft to 10461.5 ft
 Data: 07_10_KEBO\Well Based\DAQ-0001-003\
 Plot File: \ACRT\5_INCH

MAIN SECTION 5" = 100'

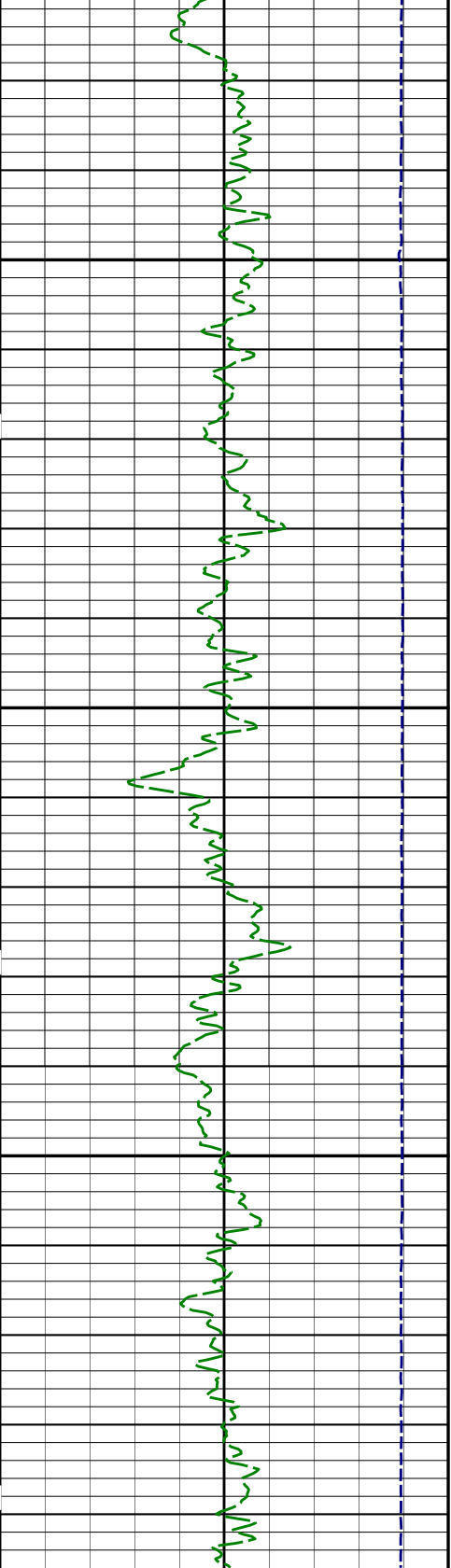
HALLIBURTON Plot Time: 10-Jul-21 08:57:05
 Plot Range: 8120 ft to 8402.5 ft
 Data: 07_10_KEBO\Well Based\DAQ-0001-001\
 Plot File: \ACRT\5_INCH_RPT

REPEAT SECTION 5" = 100'

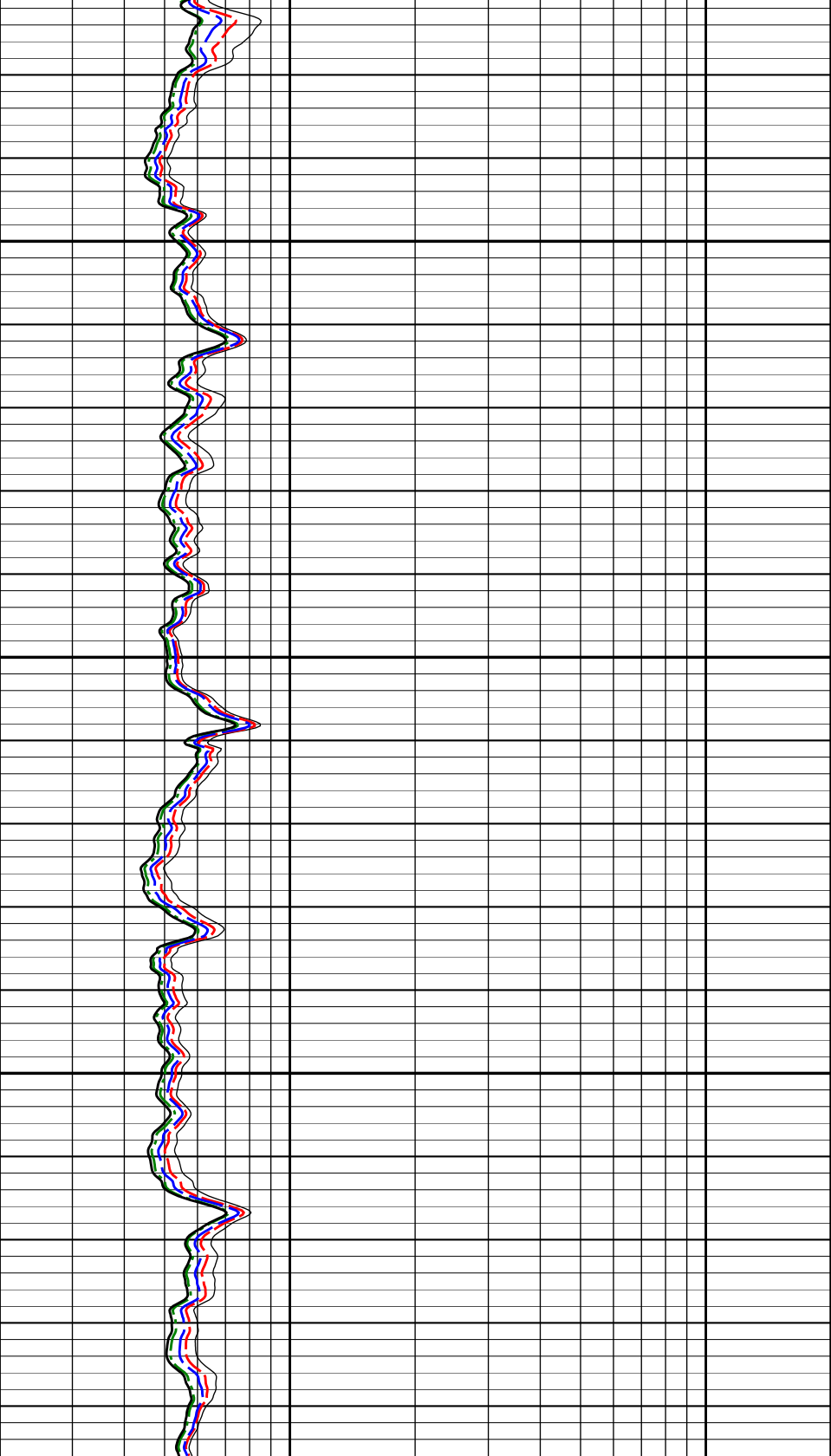
0 Gamma API 150
 api
 21K Tension 1K
 pounds

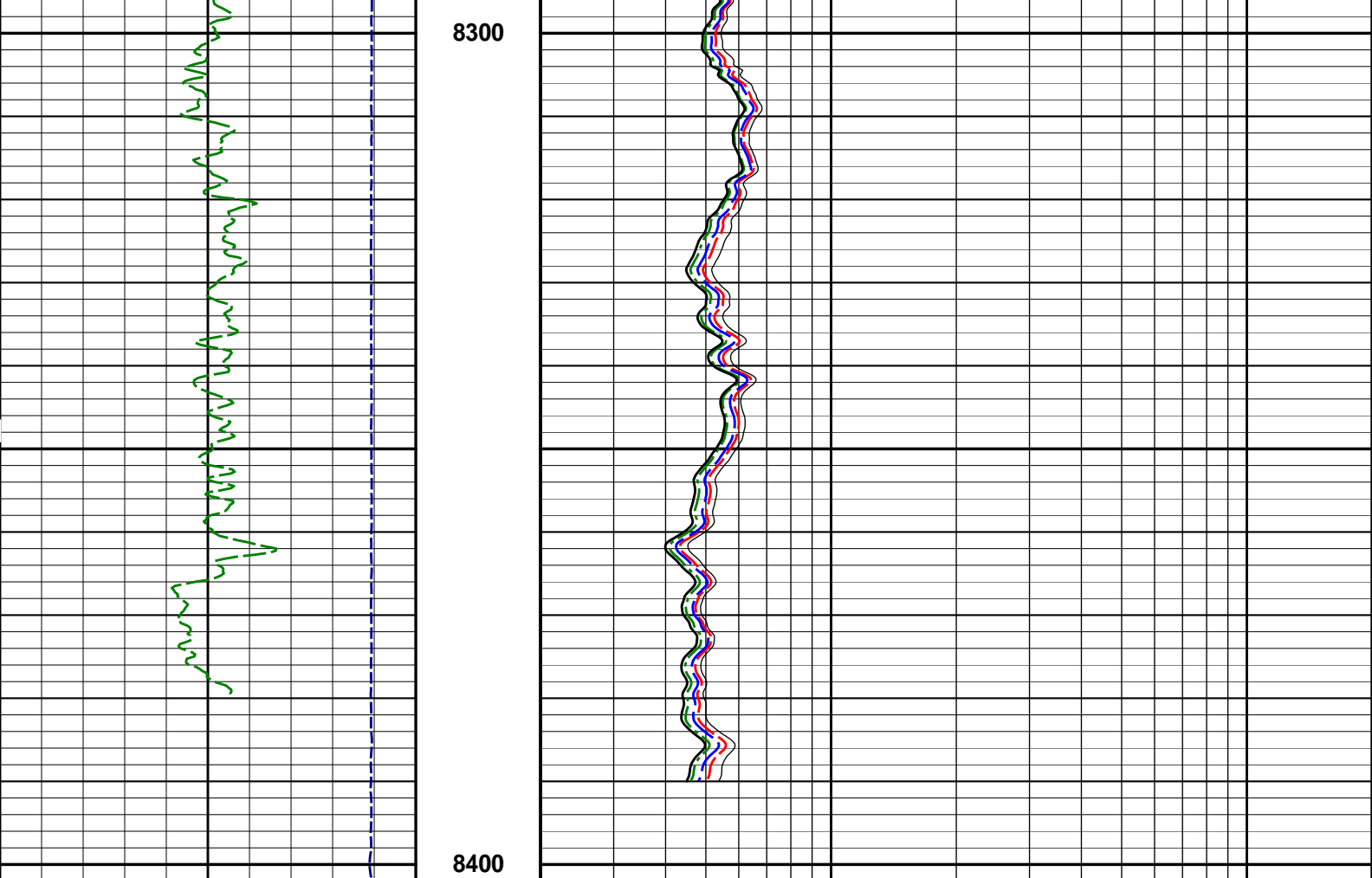
MD
 1 : 240
 ft

0.2 10in Resistivity 2ft Res 20
 ohm-metre
 0.2 20in Resistivity 2ft Res 20
 ohm-metre
 0.2 30in Resistivity 2ft Res 20
 ohm-metre
 0.2 60in Resistivity 2ft Res 20
 ohm-metre
 0.2 90in Resistivity 2ft Res 20
 ohm-metre



8200





8300

8400

21K	Tension	1K
	pounds	
0	Gamma API	150
	api	

MD
1 : 240
ft

0.2	90in Resistivity 2ft Res	20
	ohm-metre	
0.2	60in Resistivity 2ft Res	20
	ohm-metre	
0.2	30in Resistivity 2ft Res	20
	ohm-metre	
0.2	20in Resistivity 2ft Res	20
	ohm-metre	
0.2	10in Resistivity 2ft Res	20
	ohm-metre	

HALLIBURTON

Plot Time: 10-Jul-21 08:57:06
 Plot Range: 8120 ft to 8402.5 ft
 Data: 07_10_KEBO\Well Based\DAQ-0001-001\
 Plot File: \ACRT\5_INCH_RPT

REPEAT SECTION 5" = 100'

HALLIBURTON

CALIBRATION REPORT

DOWNHOLE TENSION SHOP CALIBRATION

Engineer: MOHAMED ABUELGASIM	Calibration Date: 10-Jul-21 07:01:55
Software Version: WL INSITE R6.4.10 (Build 2)	Calibration Version: 1

DOWNHOLE LOAD CELL					
	Measurement	Tool Value	Measurement	Calibrated	Units
	Low	-2131.83	-30.89	0.00	lbs
	High	-377.33	390.38	585.00	lbs

NATURAL GAMMA RAY TOOL SHOP CALIBRATION			
Tool Name: GTET - 10965404	Reference Calibration Date: 16-Jun-21 15:04:32		
Engineer: MOHAMED ABUELGASIM	Calibration Date: 16-Jun-21 16:08:33		
Software Version: WL INSITE R6.2.6 (Build 4)	Calibration Version: 1		

Calibrator Source S/N: TB-768
 Calibrator API Reference:203.00 api
 Equivalent Calibrator API Reference:206.6 api

Measurement	Measured	Calibrated	Units
Background	47.4	46.5	api
Background + Calibrator	258.0	253.1	api
Calibrator	210.6	206.6	api

NATURAL GAMMA RAY TOOL FIELD CALIBRATION			
Tool Name: GTET - 10965404	Reference Calibration Date: 16-Jun-21 16:08:33		
Engineer: MOHAMED ABUELGASIM	Calibration Date: 16-Jun-21 16:11:05		
Software Version: WL INSITE R6.2.6 (Build 4)	Calibration Version: 1		

Calibrator Source S/N: TB-768
 Calibrator API Reference:203.00 api
 Equivalent Calibrator API Reference:206.6 api

Field Verification	Shop	Field	Units
Background	46.5	45.0	api
Background + Calibrator	253.1	255.1	api
Calibrator	206.6	210.2	api

Shop	Field	Difference	Tolerance
206.6	210.2	-3.6	+/- 9.00

ARRAY COMPENSATED TRUE RESISTIVITY SHOP CALIBRATION			
Tool Name: ACRt Sonde - 10933411	Reference Calibration Date: 31-Mar-21 16:01:38		
Engineer: MICHAEL GALLION	Calibration Date: 05-May-21 14:53:53		
Software Version: WL INSITE R6.4.10 (Build 2)	Calibration Version: 1		
Host Tool Name: ACRt Instrument - 10967817			

TYPICAL GAIN RANGE									
Subarray	R12KHz			R36KHz			R72KHz		
	Lower	(mmho/m)	Upper	Lower	(mmho/m)	Upper	Lower	(mmho/m)	Upper
A1 (80")	0.95	1.0321	1.05	0.95	1.0256	1.05	0.95	1.0178	1.05
A2 (50")	0.95	1.0301	1.05	0.95	1.0287	1.05	0.95	1.0224	1.05
A3 (29")	0.95	1.0042	1.05	0.95	1.0044	1.05	0.95	0.9988	1.05
A4 (17")	0.95	1.0032	1.05	0.95	1.0000	1.05	0.95	0.9977	1.05
A5 (10")	N/A	N/A	N/A	0.95	0.9850	1.05	0.95	0.9833	1.05
A6 (6")	N/A	N/A	N/A	0.95	0.9787	1.05	0.95	0.9772	1.05

SONDE OFFSET									
--------------	--	--	--	--	--	--	--	--	--

Subarray	R12KHz	R36KHz	R72KHz
	(mmho/m)	(mmho/m)	(mmho/m)
A1 (80")	0.899	-3.664	-4.946
A2 (50")	0.568	-3.165	-4.563
A3 (29")	-9.517	-3.149	-2.886
A4 (17")	-100.391	-32.141	-25.751
A5 (10")	N/A	-88.113	-43.273
A6 (6")	N/A	337.584	158.094

TRANSMITTER CURRENT GAIN				R-MUD VERIFICATION			
Signal	Lower	R	Upper	Signal	Lower (ohm-m)	Measured (ohm-m)	Upper (ohm-m)
12K	0.6	0.91	1.3	Mud Cell	0.95	1.00	1.05
36K	1.0	1.84	2.0				
72K	1.0	1.15	2.0				

PASS/FAIL SUMMARY	
GAIN RANGE CHK	PASS
SONDE OFFSET CHK	PASS
TOOL OK TO LOG	

CALIBRATION SUMMARY

Sensor	Shop	Field	Post	Difference	Tolerance	Units
RWCH-12027542						
DH Tension Zero	0.00	-----	-----	0.00	-----	lbs
DH Tension Cal	585.00	-----	-----	0.00	-----	lbs
GTET-10965404						
Gamma Ray Calibrator	206.6	210.2	-----	-3.6	+/- 9.00	api
ACRt Sonde-10933411						
Mud Cell	1.00	-----	-----	0	-----	ohm-m

Data: 07_10_KEBO\0001 RWCH-GTET-ACRTIDLE Date: 10-Jul-21 08:52:10

HALLIBURTON PARAMETERS REPORT

Depth (ft)	Tool Name	Mnemonic	Description	Value	Units
TOP					
	SHARED	BS	Bit Size	8.500	in
	SHARED	UBS	Use Bit Size instead of Caliper for all applications.	Yes	
	SHARED	MDBS	Mud Base	Oil	
	SHARED	MDWT	Borehole Fluid Weight	15.400	ppg
	SHARED	WAGT	Weighting Agent	Barite	
	SHARED	BSAL	Borehole salinity	0.00	ppm
	SHARED	FSAL	Formation Salinity NaCl	0.00	ppm
	SHARED	WPHS	OBM Water Phase Salinity NaCl	0.00	ppm
	SHARED	OFOW	Base Oil Fraction from Oil/Water Ratio	1.00	
	SHARED	OBMT	Oil based Mud Type	Diesel	
	SHARED	KPCT	Percent K in Mud by Weight?	0.00	%
	SHARED	CSD	Logging Interval is Cased?	No	

SHARED	ICOD	AHV Casing OD	7.625	in
SHARED	CSTR	Compressive Strength	1000.00	psia
SHARED	ST	Surface Temperature	75.0	degF
SHARED	TD	Total Well Depth	10000.00	ft
SHARED	BHT	Bottom Hole Temperature	200.0	degF
SHARED	SVTM	Navigation and Survey Master Tool	NONE	
SHARED	AZTM	High Res Z Accelerometer Master Tool	GTET	
SHARED	TEMM	CBM Temperature Master Tool	GTET	
SHARED	CACL	Calcium-weighted OBM CaCl2 weight %	30.00	%
SHARED	OBMS	Calcium-weighted OBM solids volume in v/v	0.18	
SHARED	OBMW	Calcium-weighted OBM water volume in v/v	0.16	
Rwa / CrossPlot	XPOK	Process Crossplot?	Yes	
Rwa / CrossPlot	FCHO	Select Source of F	Automatic	
Rwa / CrossPlot	AFAC	Archie A factor	0.6200	
Rwa / CrossPlot	MFAC	Archie M factor	2.1500	
Rwa / CrossPlot	RMFR	Rmf Reference	0.10	ohmm
Rwa / CrossPlot	TMFR	Rmf Ref Temp	75.00	degF
Rwa / CrossPlot	RWA	Resistivity of Formation Water	0.05	ohmm
Rwa / CrossPlot	ADP	Use Air Porosity to calculate CrossplotPhi	No	
Rwa / CrossPlot	BHSM	Borehole Size Source Tool	Bit Size	
Rwa / CrossPlot	ROIN	Input for RO Calculation	Rwa	
GTET	ACOK	Do ACCZ Calculations?	Yes	
GTET	GROK	Process Gamma Ray?	Yes	
GTET	GEOK	Process Gamma Ray EVR?	No	
GTET	TPOS	Tool Position for Gamma Ray Tools.	Eccentered	
GTET	BHSM	Borehole Size Source Tool	Bit Size	
ACRt Sonde	RTOK	Process ACRt?	Yes	
ACRt Sonde	MNSO	Minimum Tool Standoff	1.50	in
ACRt Sonde	TCS1	Temperature Correction Source	FP Lwr & FP Upr	
ACRt Sonde	TPOS	Tool Position	Free Hanging	
ACRt Sonde	RMOP	Rmud Source	Mud Cell	
ACRt Sonde	RMIN	Minimum Resistivity for MAP	0.20	ohmm
ACRt Sonde	RMAX	Maximum Resistivity for MAP	200.00	ohmm
ACRt Sonde	THQY	Threshold Quality	0.50	
ACRt Sonde	MRFX	Fixed mud resistivity	2000	ohmm
ACRt Sonde	BHSM	Borehole Size Source Tool	Bit Size	
ACRt Sonde	MBFL	Apply Corkscrew Effect?	No	


BOTTOM

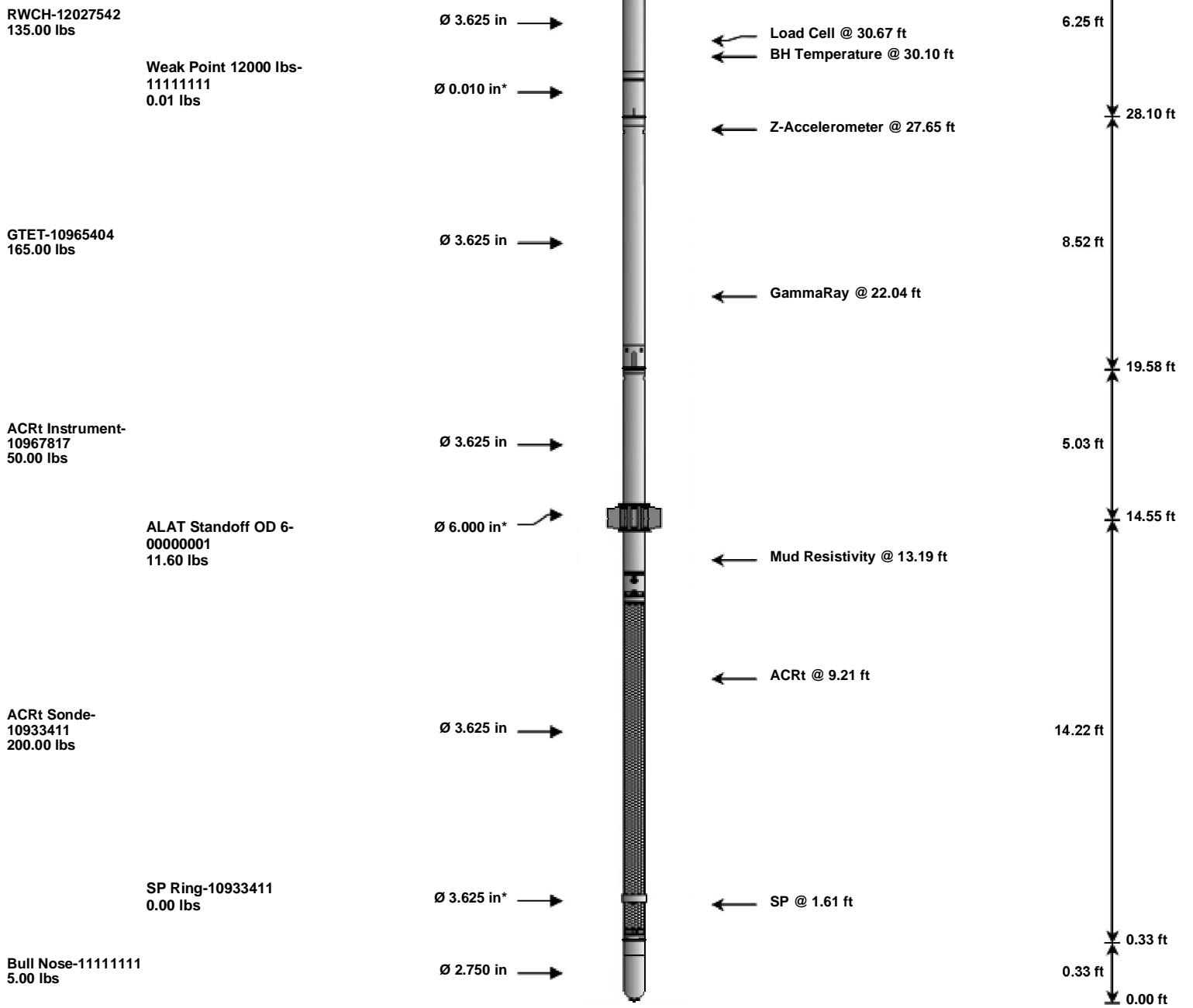
Data: 07_10_KEBO0001 RWCH-GTET-ACRTIDLE

Date: 10-Jul-21 08:51:56

HALLIBURTON

TOOL STRING DIAGRAM REPORT

Description	Overbody Description	O.D.	Diagram	Sensors @ Delays	Length	Accumulated Length
		Ø 2.310 in				34.35 ft



Mnemonic	Tool Name	Serial Number	Weight (lbs)	Length (ft)	Accumulated Length (ft)	Max. Log. Speed (fpm)
RWCH	Releasable Wireline Cable Head	12027542	135.00	6.25	28.10	300.00
WP12K	Weak Point 12000 lbs	11111111	0.01	0.01	* 28.90	300.00
GTET	Gamma Telemetry Tool	10965404	165.00	8.52	19.58	60.00
ACRT	Array Compensated True Resistivity Instrument Section	10967817	50.00	5.03	14.55	120.00
ACRT	Array Compensated True Resistivity Sonde Section	10933411	200.00	14.22	0.33	120.00
SP	SP Ring	10933411	0.00	0.25	* 1.61	300.00
ALATS	Array Laterolog Tool OD 6 Standoff	00000001	11.60	1.00	* 14.07	60.00
BLNS	Bull Nose	11111111	5.00	0.33	0.00	300.00

Total **566.61** **34.35**

* Not included in Total Length and Length Accumulation.

Data: 07_10_KEBO\0001 RWCH-GTET-ACRTIDLE Date: 10-Jul-21 07:00:34

COMPANY **KEBO OIL & GAS, INC**

WELL **DIAMONDBACK 1**

FIELD	WILDCAT		
COUNTY	BRAZORIA	STATE	TX
HALLIBURTON		ARRAY INDUCTION	