



**MEASURED DEPTH
FORMATION EVALUATION
& GAS ANALYSIS
LOG**
1" = 100'

COUNTY Brazoria County
FIELD Wildcat
LOCATION LATITUDE: 29° 12' 43.15" N
LONGITUDE: 95° 07' 44.80" W
WELL Blackstone #1
COMPANY Kebo Oil & Gas, Inc.

COMPANY		Kebo Oil & Gas, Inc.	
GEOLOGIST		Paul Habermas	
WELL	Blackstone #1	FIELD	Wildcat
COUNTY	Brazoria County	STATE	Texas
LOCATION		OTHER SERVICES	
LATITUDE: 29° 12' 43.15" N	LONGITUDE: 95° 07' 44.80" W	5" MD LOG	
API SERIAL NO	SEC	TWP	RANGE
42-039-33353			

SPUD DATE 7/30/2020 TOTAL DEPTH 12000' ELEV: _____
LOGGING STARTED 8/30/20 @ 7900' K.B. 19.6'
LOGGING FINISHED 9/9/20 @ 12000' D.F. 18.6'
G.L. 2.6'

BORE HOLE RECORD		CASING RECORD				
HOLE SIZE	FROM	TO	SIZE	WGT.	FROM	TO
8.5"	7900'	10282'	7.625"	33.7	77.29'	10281'
6.5"	10282'	12000'				

DRILLING CONTRACTOR Lauson Drilling
RIG Lauson #2
REMARKS _____
PERSONNEL Mike Derrick & Luis Trochez

Disclaimer: STRATAGRAPH, INC. will make every effort to render our services efficiently and accurately, but will not be liable for failure to report or interpret its analysis correctly.

LEGEND

Abbreviations BG Background Gas CB Corebit CG Connection Gas CK Filter Cake CKF Check For Flow CL Salinity ppm CO Circulate Out CR Circulate Returns CT Carbide Test DB Diamond Bit DBG Drilling Background Gas DC Depth correction DCB Diamond Corebit DF Derrick Floor DG Drilling Gas DS Directional Survey DST Drill Stem Test EL Electric Log E.M.A. Equivalent Methane Gas F Filtrates API cc's F/T Flowline Temperature FR Fair FV Funnel Viscosity API sec GCM Gas Cut Mud GCW Gas Cut Water GD Good G&OCM Gas & Oil Cut Mud GL Ground Level GTT Gas Trip Test KB Kelley bushing LAT Log After Trip		LAST Log After Short Trip MW Mud Weight in lbs/gal NCB New Corebit NB New Bit NR No Returns PDCB Polycrystalline Diamond Compact Bit PERF Perforated PPM Parts Per Million PR Poor PRT Poor Returns PV Plastic Viscosity RM Mud Resistivity OHM-METER RMC Mud-Cake Resestivity OHM-METER RMF Mud Filtrate Resestivity RPM Revolutions Per Minute RRB Return Bit RT Rotary Table SF Sea Floor SO Show Of Oil SOL Solids % SPP Stand Pipe Pressure STG Short Trip Gas SWG Swab Gas SVG Survey Gas S/T Suction Temperature TB Turbo Drill TD Total Depth TCL Trip Chlorides TG Trip Gas TVD Total Vertical Depth WOB Weight On Bit	
Lithology Symbols CLAY MARL SILT LIMESTONE LIMONITE GYPSUM DOLOMITE ANHYDRITE CHERT SALT COAL SHALE SANDSTONE SAND CHALK ASH		Other Symbols CASING SEAT CORED INTERVAL NO RECOVERY SIDEWALL CORE TEST INTERVAL WIRELINE TEST Oil Show Gas Show FLUORESCENCE BRIGHT DULL MINERAL	

NOTE: All Lithological Symbols are as per the Shell Oil Exploration Training Manual, Acknowledged by the American Association of Petroleum Geologists.

ROP		Slide	Oil	Gas	% Lith	Depth	Gas		Chromatograph		Descriptions
Instant ROP	FPH						Total Gas	Unit	Methane	PER	
400		0				0	400	0	10		
		150							4		

0	PER	1
Propane		
0	PER	1
Iso-Butane		
0	PER	1
Normal Butane		
0	PER	1
Iso-Pentane		
0	PER	1
Normal Pentane		
0	PER	1

7800
7900
8000
8100
8200
8300
8400
8500
8600

Began Logging at 7900' MD on 8/30/2020

TOL 7727' MD
9 5/8" Casing Set @ 7900' MD

Calibrated Gas Equip.

NB#3, 8.5", DB BITS
SN D3474, Jet's-5X13
In @ 7910' MD

WOB 0.7
RPM 37
SPM 67
SPP 2540

100 units = 1%

MWI 14.8
MWO 14.8

SH: gry - lt gry, frm, blk, i.p. flk, calc cmt/mtrx, fl - dns, i.p. Clst, i.p. lam, n fluor

MD 7942' TVD 7713.66'
INC 14.86° AZI 258.82°

MWI 14.9
MWO 14.9

SH: gry - lt gry, frm, occ hd, blk, calc cmt/mtrx, dns, pred slty, occ Clst, brit, tr Calc incl

MD 8068' TVD 7834.99'
INC 16.44° AZI 262.25°

CG 102u

SST: gry, consol - mod consol, v f gr, occ f gr, mod Slit gr, sbang - sbrndd, mod srtg, arg cmt/mtrx

CG 132u

MD 8195' TVD 7956.63'
INC 16.97° AZI 261.02°

CG 124u

SD: brn - clr - gry - pk, uncons, pred v f gr, occ f gr, abd Slit gr, sbang - sbrndd, fros - pit, pr srtg

CG 165u

MD 8321' TVD 8076.96'
INC 17.54° AZI 259.79°

CG 103u

RMW to 15.1

SH: gry - lt gry, frm - hd, blk, occ flk, calc cmt/mtrx, dns - dl, pred slty, mod brit, occ Clst

RMW to 15.2

CG 139u

MD 8448' TVD 8198.23'
INC 17.05° AZI 265.41°

8/31/2020

WOB 1-2k
RPM 60
SPM 67
SPP 2685

CG 207u

MWI 15.2
MWO 15.2

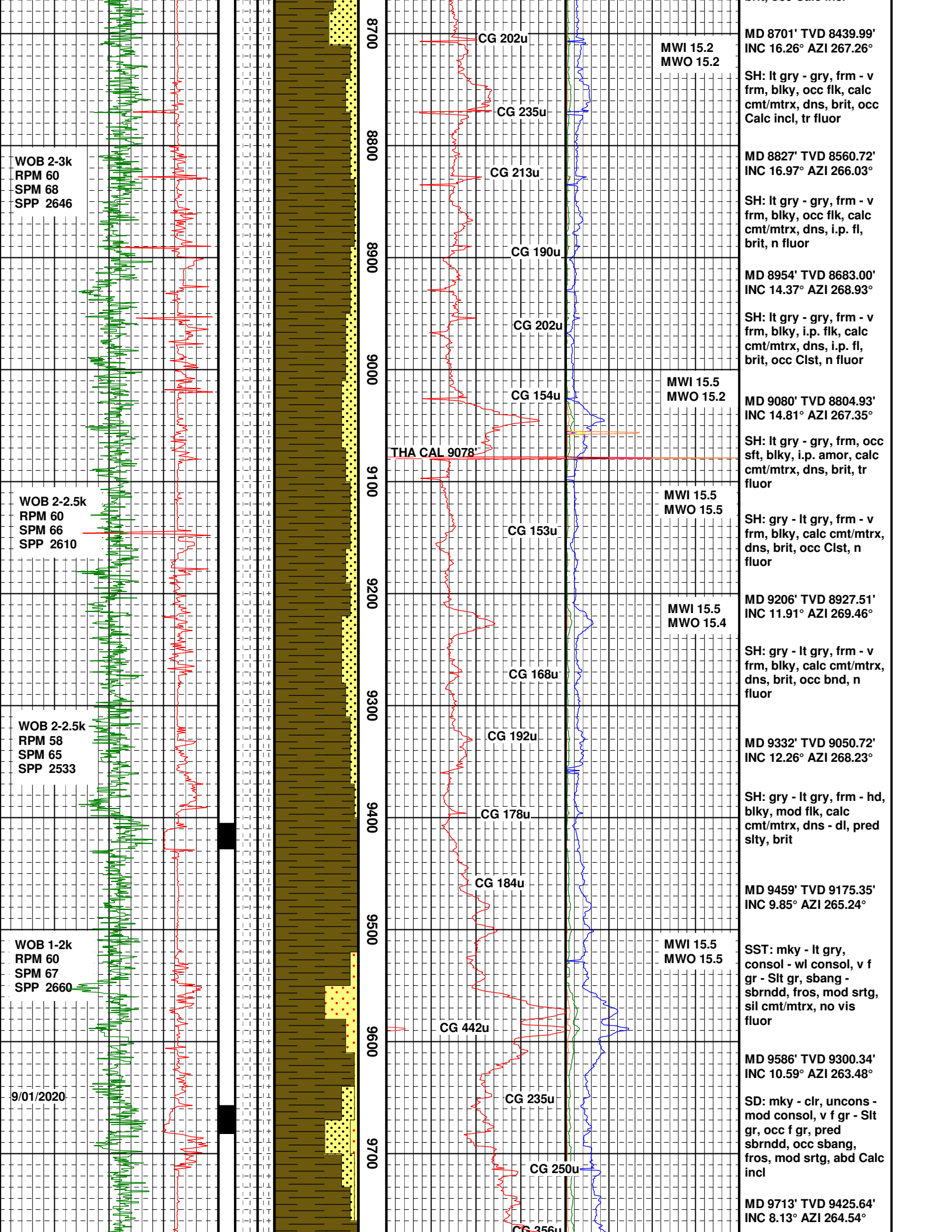
SD: clr - bu - mky, uncons, v f gr - Slit gr, occ f gr, sbang - sbrndd, mod fros, mod srtg - pr srtg, no vis fluor

CG 222u

MD 8575' TVD 8319.46'
INC 17.63° AZI 263.92°

CG 155u

SH: lt gry - gry, frm - hd, blk, occ flk, calc cmt/mtrx, dns - dl - slty, brit, occ Calc incl



WOB 2-3k
RPM 60
SPM 68
SPP 2646

WOB 2-2.5k
RPM 60
SPM 66
SPP 2610

WOB 2-2.5k
RPM 58
SPM 65
SPP 2533

WOB 1-2k
RPM 60
SPM 67
SPP 2660

9/01/2020

8700
8800
8900
9000
9100
9200
9300
9400
9500
9600
9700

CG 202u
CG 235u
CG 213u
CG 190u
CG 202u
CG 154u
THA CAL 9078
CG 153u
CG 168u
CG 192u
CG 178u
CG 184u
CG 442u
CG 235u
CG 250u
CG 356u

MWI 15.2
MWO 15.2

MWI 15.5
MWO 15.2

MWI 15.5
MWO 15.5

MWI 15.5
MWO 15.4

MWI 15.5
MWO 15.5

MD 8701' TVD 8439.99'
INC 16.26° AZI 267.26°

SH: lt gry - gry, frm - v
frm, blk, occ flk, calc
cmt/mtrx, dns, brit, occ
Calc incl, tr fluor

MD 8827' TVD 8560.72'
INC 16.97° AZI 266.03°

SH: lt gry - gry, frm - v
frm, blk, occ flk, calc
cmt/mtrx, dns, i.p. fl,
brit, n fluor

MD 8954' TVD 8683.00'
INC 14.37° AZI 268.93°

SH: lt gry - gry, frm - v
frm, blk, i.p. flk, calc
cmt/mtrx, dns, i.p. fl,
brit, occ Clst, n fluor

MD 9080' TVD 8804.93'
INC 14.81° AZI 267.35°

SH: lt gry - gry, frm, occ
sft, blk, i.p. amor, calc
cmt/mtrx, dns, brit, tr
fluor

MD 9206' TVD 8927.51'
INC 11.91° AZI 269.46°

SH: gry - lt gry, frm - v
frm, blk, calc cmt/mtrx,
dns, brit, occ bnd, n
fluor

MD 9332' TVD 9050.72'
INC 12.26° AZI 268.23°

SH: gry - lt gry, frm - hd,
blk, mod flk, calc
cmt/mtrx, dns - dl, pred
sity, brit

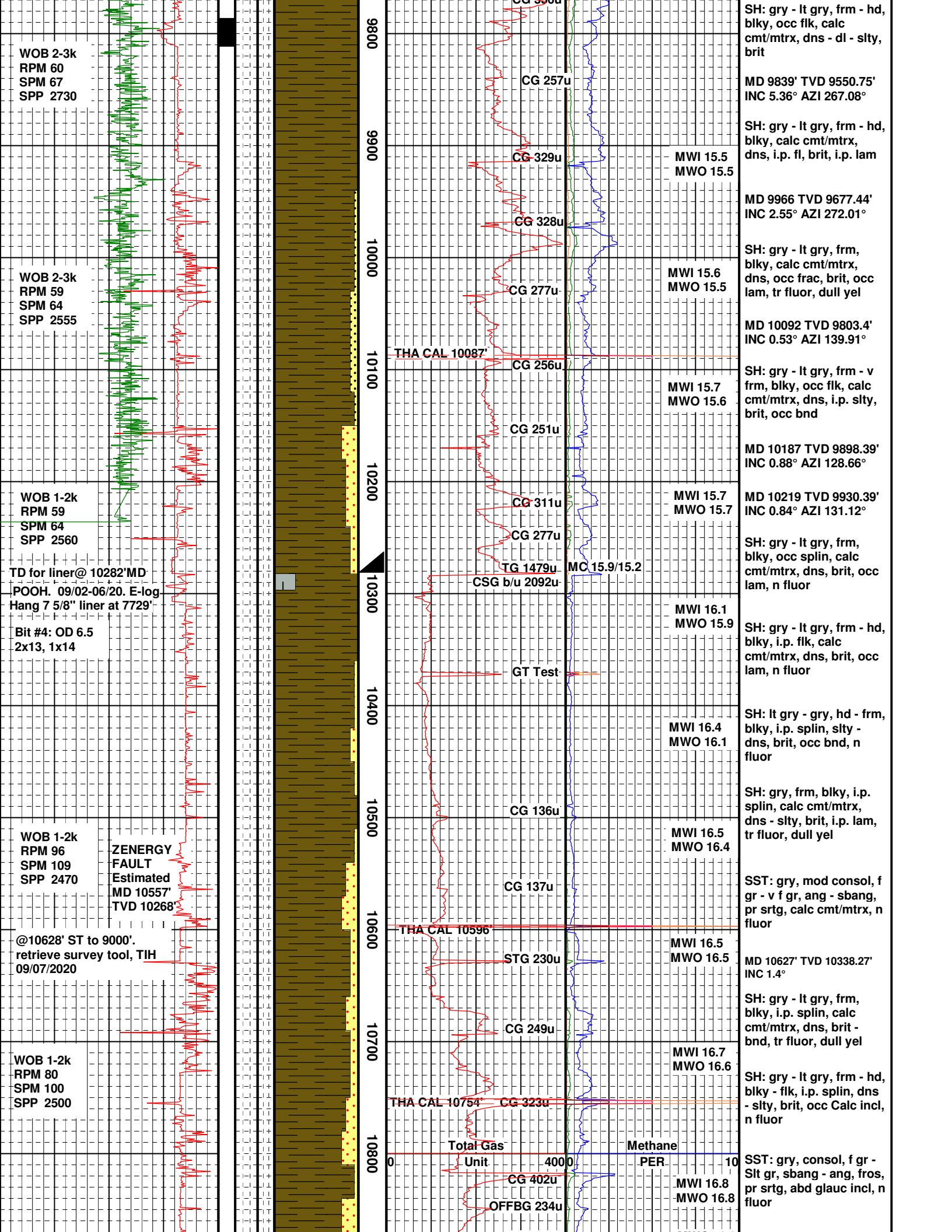
MD 9459' TVD 9175.35'
INC 9.85° AZI 265.24°

SST: mky - lt gry,
consol - wl consol, v f
gr - Slit gr, sbang -
sbrndd, fros, mod srtg,
sil cmt/mtrx, no vis
fluor

MD 9586' TVD 9300.34'
INC 10.59° AZI 263.48°

SD: mky - clr, uncon -
mod consol, v f gr - Slit
gr, occ f gr, pred
sbrndd, occ sbang,
fros, mod srtg, abd Calc
incl

MD 9713' TVD 9425.64'
INC 8.13° AZI 264.54°



WOB 2-3k
RPM 60
SPM 67
SPP 2730

WOB 2-3k
RPM 59
SPM 64
SPP 2555

WOB 1-2k
RPM 59
SPM 64
SPP 2560

TD for liner@ 10282'MD
POOH. 09/02-06/20. E-log
Hang 7 5/8" liner at 7729'

Bit #4: OD 6.5
2x13, 1x14

WOB 1-2k
RPM 96
SPM 109
SPP 2470

ZENERGY
FAULT
Estimated
MD 10557'
TVD 10268'

@10628' ST to 9000'.
retrieve survey tool, TIH
09/07/2020

WOB 1-2k
RPM 80
SPM 100
SPP 2500

9800
9900
10000
10100
10200
10300
10400
10500
10600
10700
10800

CG 300u

CG 329u

CG 328u

CG 277u

THA CAL 10087'

CG 256u

CG 251u

CG 311u

CG 277u

TG 1479u

CSG b/u 2092u

GT Test

CG 136u

CG 137u

THA CAL 10596'

STG 230u

CG 249u

THA CAL 10754'

CG 323u

Total Gas

Unit

Methane

PER

CG 402u

OFFBG 234u

SH: gry - lt gry, frm - hd,
blky, occ flk, calc
cmt/mtrx, dns - dl - slty,
brit

MD 9839' TVD 9550.75'
INC 5.36° AZI 267.08°

SH: gry - lt gry, frm - hd,
blky, calc cmt/mtrx,
dns, i.p. fl, brit, i.p. lam

MD 9966 TVD 9677.44'
INC 2.55° AZI 272.01°

SH: gry - lt gry, frm,
blky, calc cmt/mtrx,
dns, occ frac, brit, occ
lam, tr fluor, dull yel

MD 10092 TVD 9803.4'
INC 0.53° AZI 139.91°

SH: gry - lt gry, frm - v
frm, blky, occ flk, calc
cmt/mtrx, dns, i.p. slty,
brit, occ bnd

MD 10187 TVD 9898.39'
INC 0.88° AZI 128.66°

MD 10219 TVD 9930.39'
INC 0.84° AZI 131.12°

SH: gry - lt gry, frm,
blky, occ splin, calc
cmt/mtrx, dns, brit, occ
lam, n fluor

SH: gry - lt gry, frm - hd,
blky, i.p. flk, calc
cmt/mtrx, dns, brit, occ
lam, n fluor

SH: lt gry - gry, hd - frm,
blky, i.p. splin, slty -
dns, brit, occ bnd, n
fluor

SH: gry, frm, blky, i.p.
splin, calc cmt/mtrx,
dns - slty, brit, i.p. lam,
tr fluor, dull yel

SST: gry, mod consol, f
gr - v f gr, ang - sbang,
pr srtg, calc cmt/mtrx, n
fluor

MD 10627' TVD 10338.27'
INC 1.4°

SH: gry - lt gry, frm,
blky, i.p. splin, calc
cmt/mtrx, dns, brit -
bnd, tr fluor, dull yel

SH: gry - lt gry, frm - hd,
blky - flk, i.p. splin, dns
- slty, brit, occ Calc incl,
n fluor

SST: gry, consol, f gr -
Slit gr, sbang - ang, fros,
pr srtg, abd glauc incl, n
fluor

MWI 15.5
MWO 15.5

MWI 15.6
MWO 15.5

MWI 15.7
MWO 15.6

MWI 15.7
MWO 15.7

MC 15.9/15.2

MWI 16.1
MWO 15.9

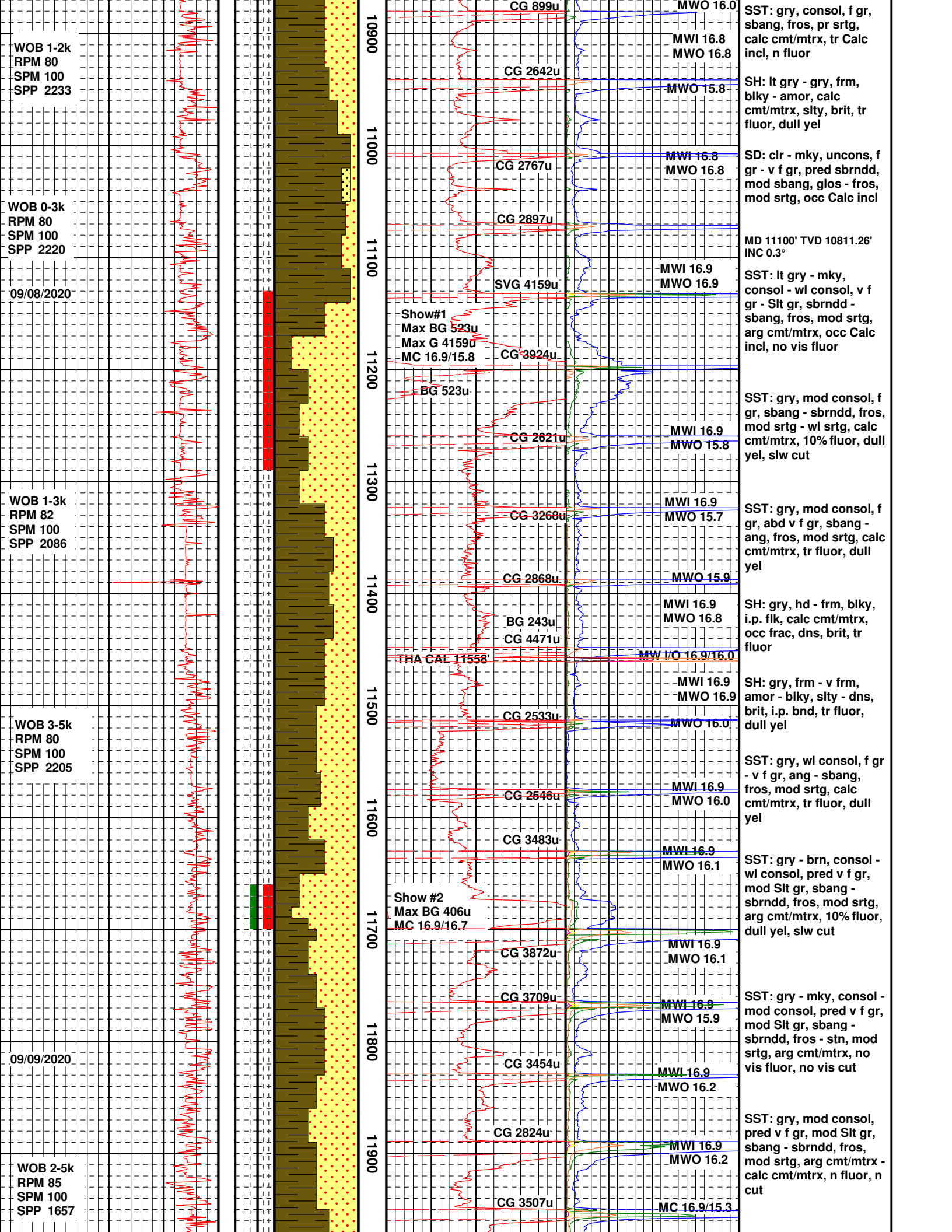
MWI 16.4
MWO 16.1

MWI 16.5
MWO 16.4

MWI 16.5
MWO 16.5

MWI 16.7
MWO 16.6

MWI 16.8
MWO 16.8



P/U OFF BOTTOM @ 11990'

TD @ 12000' MD/PTB
TVD 11711.25' on
09/09/2020 07:30.

MC 16.9/16.5

SPR Off Bott G533u MC 16.9/16.5

SH: gry, frm, blk, calc
cmt/mtrx, slty, i.p. frac,
i.p. brit, i.p. lam, tr fluor,
dull yel

API MWD Gamma		
0	API	150
Instant ROP		
400	FPH	0
ROP		

Slide
Oil
Gas

% Lith

Depth

12000		
12100		
0	Total Gas	4000
0	Unit	4000
Gas		

Normal Pentane		
0	PER	1
Iso-Pentane		
0	PER	1
Normal Butane		
0	PER	1
Iso-Butane		
0	PER	1
Propane		
0	PER	1
Ethane		
0	PER	4
Methane		
0	PER	10

Chromatograph

Descriptions