



COUNTY Matagorda County
FIELD Huebner
LOCATION Lat: 2961513.0
Long: 410858.0
WELL Golf Course #1
COMPANY Kebo Oil And Gas

COMPANY Kebo Oil And Gas
GEOLOGIST _____
WELL Golf Course #1
FIELD Huebner
COUNTY Matagorda County STATE Texas
OTHER SERVICES
1" MD LOG
API SERIAL NO _____ SEC _____ TWP _____ RANGE _____
42-321-32429 3

SPUD DATE _____ TOTAL DEPTH 10200' ELEV: _____
LOGGING STARTED 9/24/2019 @ 7000' K.B. 58.9
LOGGING FINISHED 9/30/2019 @ 10200' D.F. 57.9
G.L. 43.4

BORE HOLE RECORD		CASING RECORD				
HOLE SIZE	FROM	TO	SIZE	WGT.	FROM	TO
8750	1600'	10200'	9 5/8	36 LB	Surface	1599'

DRILLING CONTRACTOR Lauson
RIG Lauson 2
REMARKS _____
PERSONNEL Rick Cauthen/Carlos Reyes

Disclaimer: STRATAGRAPH, INC. will make every effort to render our services efficiently and accurately, but will not be liable for failure to report or interpret its analysis correctly.

LEGEND

Abbreviations BG Background Gas CB Corebit CG Connection Gas CK Filter Cake CKF Check For Flow CL Salinity ppm CO Circulate Out CR Circulate Returns CT Carbide Test DB Diamond Bit DBG Drilling Background Gas DC Depth correction DCB Diamond Corebit DF Derrick Floor DG Drilling Gas DS Directional Survey DST Drill Stem Test EL Electric Log E.M.A. Equivalent Methane Gas F Filtrates API cc's F/T Flowline Temperature FR Fair FV Funnel Viscosity API sec GCM Gas Cut Mud GCW Gas Cut Water GD Good G&OCM Gas & Oil Cut Mud GL Ground Level GTT Gas Trip Test KB Kelley bushing LAT Log After Trip		LAST Log After Short Trip MW Mud Weight in lbs/gal NCB New Corebit NB New Bit NR No Returns PDCB Polycrystalline Diamond Compact Bit PERF Perforated PPM Parts Per Million PR Poor PRT Poor Returns PV Plastic Viscosity RM Mud Resistivity OHM-METER RMC Mud-Cake Resistivity OHM-METER RMF Mud Filtrate Resistivity RPM Revolutions Per Minute RRB Return Bit RT Rotary Table SF Sea Floor SO Show Of Oil SOL Solids % SPP Stand Pipe Pressure STG Short Trip Gas SWG Swab Gas SVG Survey Gas S/T Suction Temperature TB Turbo Drill TD Total Depth TCL Trip Chlorides TG Trip Gas TVD Total Vertical Depth WOB Weight On Bit		Lithology Symbols CLAY MARL SILT LIMESTONE LIMONITE GYPSUM DOLOMITE ANHYDRITE CHERT SALT COAL SHALE SANDSTONE SAND CHALK ASH		Other Symbols CASING SEAT CORED INTERVAL NO RECOVERY SIDEWALL CORE TEST INTERVAL WIRELINE TEST Oil Show Gas Show FLUORESCENCE Bright Dull Mineral	
---	--	---	--	---	--	---	--

NOTE: All Lithological Symbols are as per the Shell Oil Exploration Training Manual, Acknowledged by the American Association of Petroleum Geologists.

ROP	Slide	Oil	Gas	% Lith	Depth	Gas	Chromatograph	Descriptions
Instant ROP FPH	0				0	Total Gas Unit	Methane PER	2
200					300		Ethane PER	1

0	PER	
0	Propane	
0	PER	1
0	Iso-Butane	
0	PER	0.5
0	Normal Butane	
0	PER	0.5
0	Iso-Pentane	
0	PER	0.5
0	Normal Pentane	
0	PER	0.5

6900

6950

7000

7050

Stratagraph began logging on
9/24/2019 @ 6973 ft MD

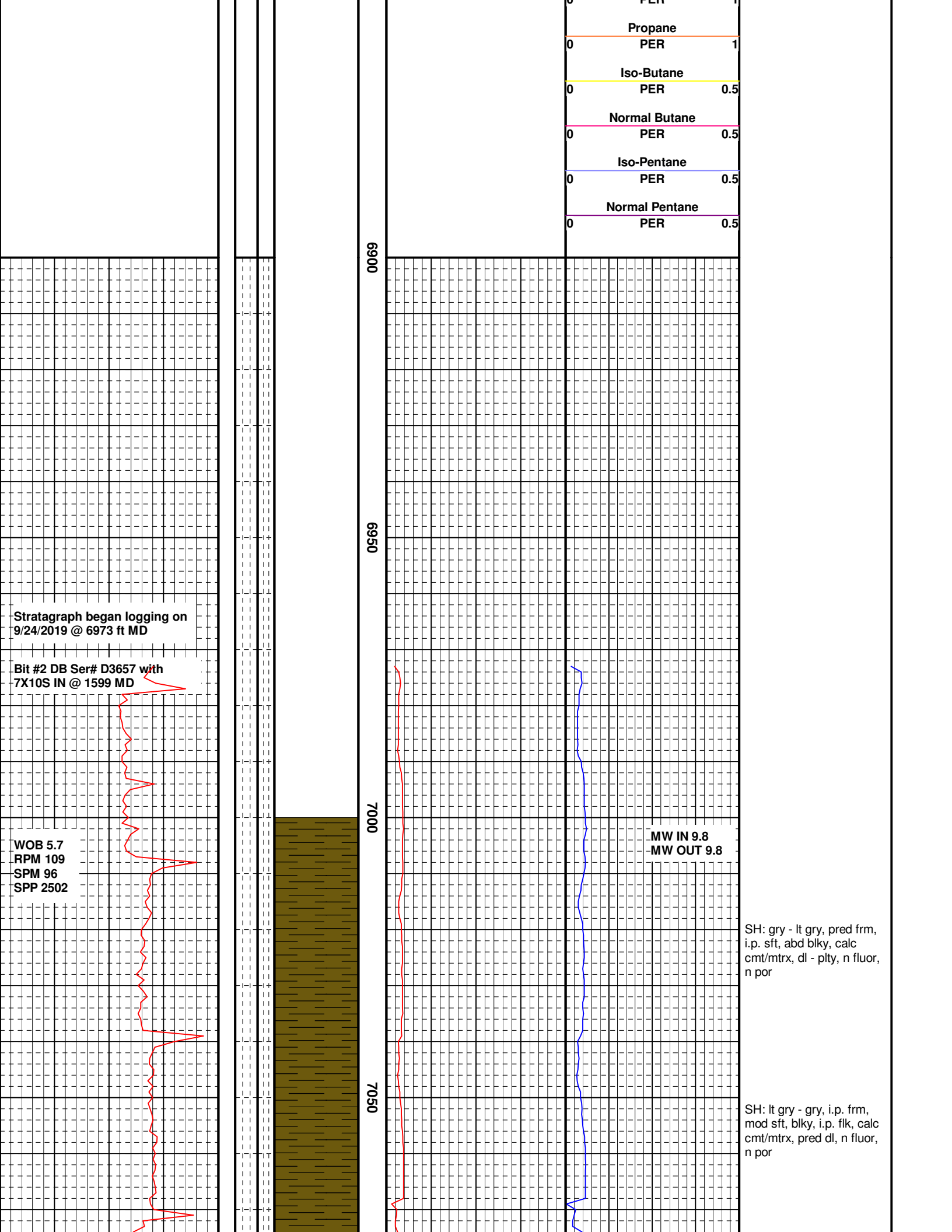
Bit #2 DB Ser# D3657 with
7X10S IN @ 1599 MD

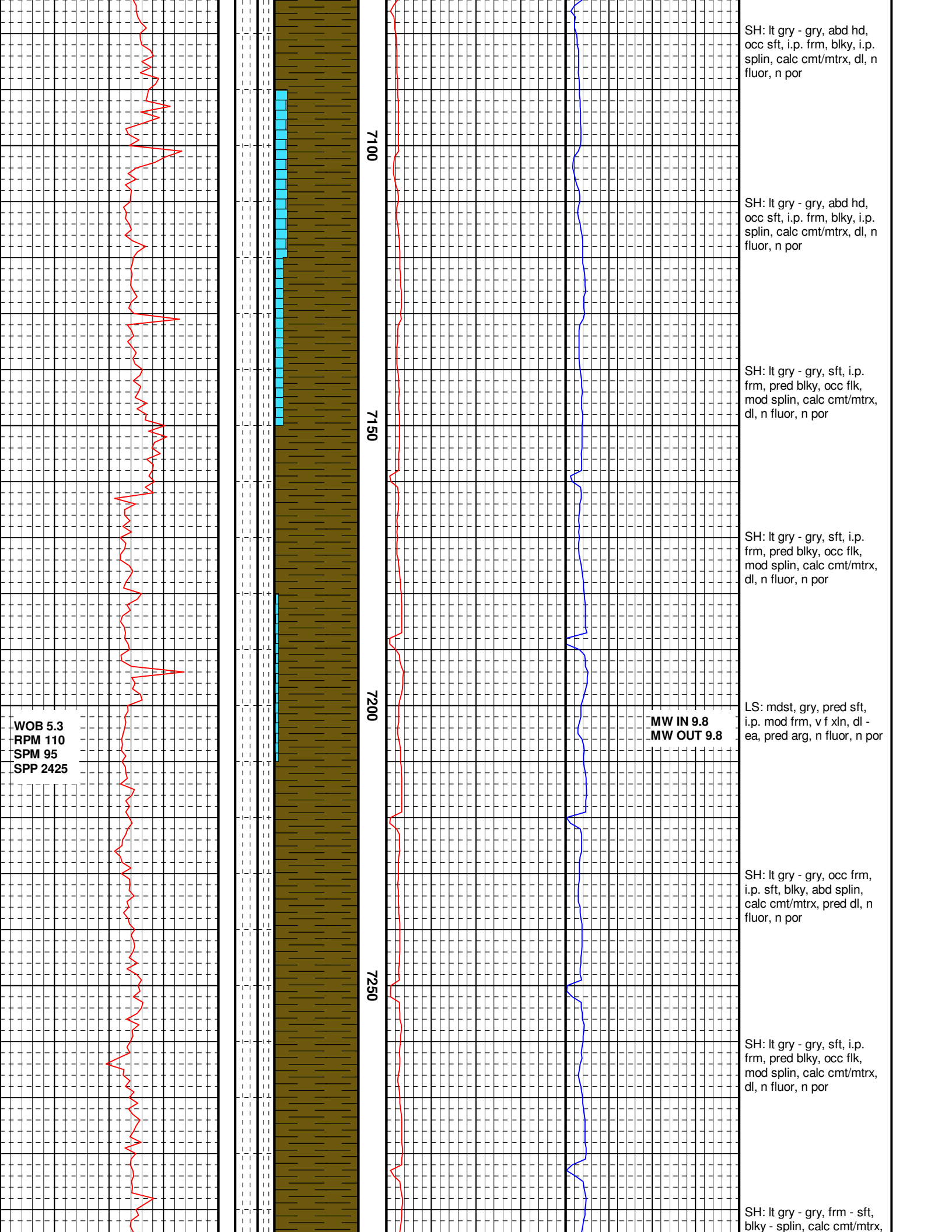
WOB 5.7
RPM 109
SPM 96
SPP 2502

MW IN 9.8
MW OUT 9.8

SH: gry - lt gry, pred frm,
i.p. sft, abd blk, calc
cmt/mtrx, dl - plty, n fluor,
n por

SH: lt gry - gry, i.p. frm,
mod sft, blk, i.p. flk, calc
cmt/mtrx, pred dl, n fluor,
n por





WOB 5.3
RPM 110
SPM 95
SPP 2425

MW IN 9.8
MW OUT 9.8

7100

7150

7200

7250

SH: lt gry - gry, abd hd,
occ sft, i.p. frm, blk, i.p.
spln, calc cmt/mtrx, dl, n
fluor, n por

SH: lt gry - gry, abd hd,
occ sft, i.p. frm, blk, i.p.
spln, calc cmt/mtrx, dl, n
fluor, n por

SH: lt gry - gry, sft, i.p.
frm, pred blk, occ flk,
mod spln, calc cmt/mtrx,
dl, n fluor, n por

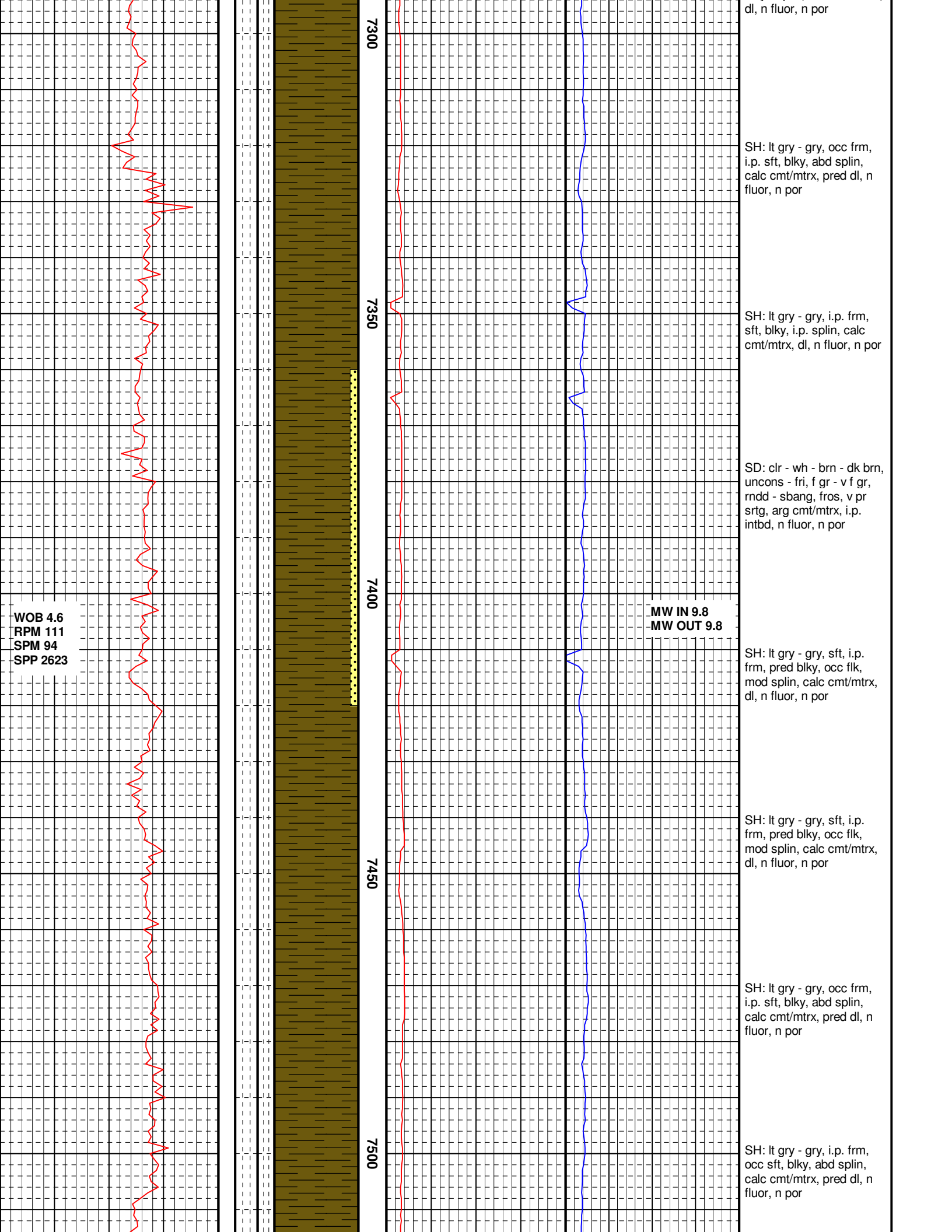
SH: lt gry - gry, sft, i.p.
frm, pred blk, occ flk,
mod spln, calc cmt/mtrx,
dl, n fluor, n por

LS: mdst, gry, pred sft,
i.p. mod frm, v f xln, dl -
ea, pred arg, n fluor, n por

SH: lt gry - gry, occ frm,
i.p. sft, blk, abd spln,
calc cmt/mtrx, pred dl, n
fluor, n por

SH: lt gry - gry, sft, i.p.
frm, pred blk, occ flk,
mod spln, calc cmt/mtrx,
dl, n fluor, n por

SH: lt gry - gry, frm - sft,
blk - spln, calc cmt/mtrx,



Wiper Trip @ 7534

WOB 5.2
RPM 114
SPM 89
SPP 2543

7550

7600

7650

7700

SH: lt gry - gry, sft, i.p.
frm, pred blk, occ flk,
mod splin, calc cmt/mtrx,
dl, n fluor, n por

SH: lt gry - gry, frm, occ v
frm, occ sft, occ splin,
calc cmt/mtrx, dl, abd plty,
n fluor

SH: lt gry - gry, pred frm,
sft, occ blk, calc
cmt/mtrx, fl - plty - dl, Clst
SD: gry - bu - clr, consol, f
gr - m gr, sbang - sbrndd,
wl srtg, calc cmt/mtrx

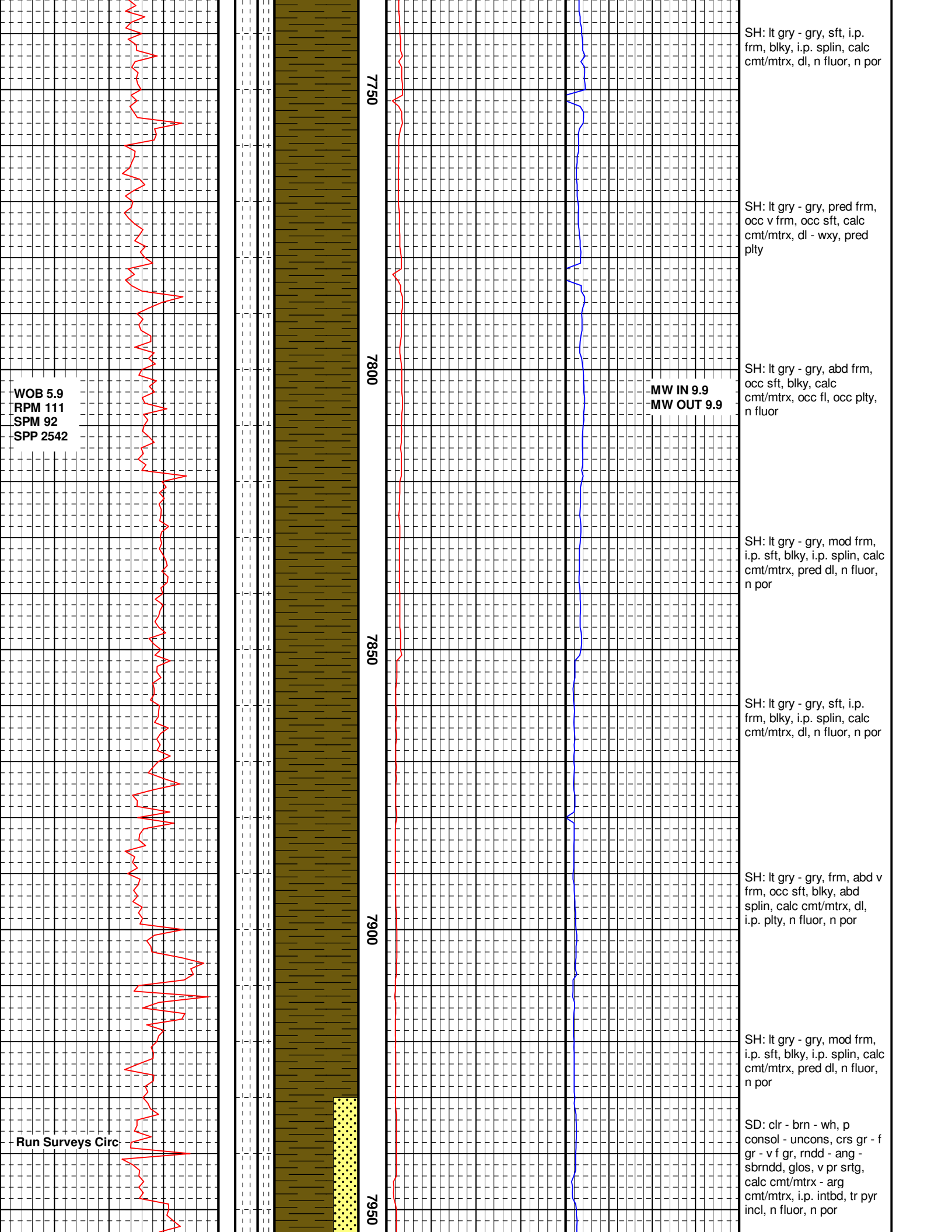
MW IN 9.8
MW OUT 9.8

SH: lt gry - gry, pred frm,
sft, occ blk, calc
cmt/mtrx, fl - plty - dl, Cls

SH: lt gry - gry, pred frm,
occ v frm, occ sft, calc
cmt/mtrx, dl - wxy, pred
plty

SH: lt gry - gry, pred frm,
occ v frm, occ sft, calc
cmt/mtrx, dl - wxy, pred
plty

SH: lt gry - gry, abd frm,
occ sft, blk, calc
cmt/mtrx, occ fl, occ plty,
n fluor



WOB 5.9
RPM 111
SPM 92
SPP 2542

Run Surveys Circ

7750

7800

7850

7900

7950

MW IN 9.9
MW OUT 9.9

SH: lt gry - gry, sft, i.p. frm, blk, i.p. splin, calc cmt/mtrx, dl, n fluor, n por

SH: lt gry - gry, pred frm, occ v frm, occ sft, calc cmt/mtrx, dl - wxy, pred pty

SH: lt gry - gry, abd frm, occ sft, blk, calc cmt/mtrx, occ fl, occ pty, n fluor

SH: lt gry - gry, mod frm, i.p. sft, blk, i.p. splin, calc cmt/mtrx, pred dl, n fluor, n por

SH: lt gry - gry, sft, i.p. frm, blk, i.p. splin, calc cmt/mtrx, dl, n fluor, n por

SH: lt gry - gry, frm, abd v frm, occ sft, blk, abd splin, calc cmt/mtrx, dl, i.p. pty, n fluor, n por

SH: lt gry - gry, mod frm, i.p. sft, blk, i.p. splin, calc cmt/mtrx, pred dl, n fluor, n por

SD: clr - brn - wh, p consol - uncons, crs gr - f gr - v f gr, radd - ang - sbrddd, glos, v pr srtg, calc cmt/mtrx - arg cmt/mtrx, i.p. intbd, tr pyr incl, n fluor, n por

WOB 5.8
RPM 110
SPM 91
SPP 2631

9/26/2019

8000

8050

8100

8150

MW IN 10.0
MW OUT 10.0

SH: lt gry - gry, sft, i.p. frm, blk, i.p. splin, calc cmt/mtrx, dl, n fluor, n por

SH: lt gry - gry, mod frm, i.p. sft, blk, i.p. splin, calc cmt/mtrx, pred dl, n fluor, n por

SD: brn - clr - wh, uncons, i.p. crs gr, mod v f gr, ang - rndd, fros - glos - stn, v pr srtg, n fluor, n por

SH: lt gry - gry, frm, abd v frm, occ sft, blk, abd splin, calc cmt/mtrx, dl, i.p. plty, n fluor, n por

SD: clr - brn - wh, p consol - uncons, f gr - v f gr, rndd - ang - sbrndd, glos, v pr srtg, calc cmt/mtrx - arg cmt/mtrx, i.p. intbd, tr pyr incl, n fluor, n por

SH: lt gry - gry, abd frm, occ sft, blk, calc cmt/mtrx, occ fl, occ plty, n fluor

SH: lt gry - gry, abd frm, occ sft, blk, calc cmt/mtrx, occ fl, occ plty, n fluor

SH: lt gry - gry, pred frm, sft, occ v frm, blk - amor, calc cmt/mtrx, dl, occ fl, occ wxy, n fluor

WOB 6.5
RPM 119
SPM 90
SPP 2681

MW IN 10.2
MW OUT 10.2

SH: lt gry - gry, pred frm,
sft, occ v frm, blk - amor,
calc cmt/mtrx, dl, occ fl,
occ wxy, n fluor

SH: gry - lt gry, pred frm,
occ sft, occ v frm, occ
blk, calc cmt/mtrx, dl, occ
wxy, fl, plty

SH: gry - lt gry, pred frm,
occ sft, occ v frm, occ
blk, calc cmt/mtrx, dl, occ
wxy, fl, plty

SH: gry - lt gry, pred frm,
occ sft, occ v sft, occ blk,
calc cmt/mtrx, dl, occ wxy,
i.p. fl, occ plty

SD: clr - mky - wh,
uncons - p consol, f gr - v
f gr, sbrndd - rndd -
sbang, fros, mod srtg,
calc cmt/mtrx, tr Calc incl,
n fluor

SD: wh - clr, mod consol,
f gr - v f gr, occ m gr,
sbang - rndd - sbrndd, pr
srtg - mod srtg, calc
cmt/mtrx

8200

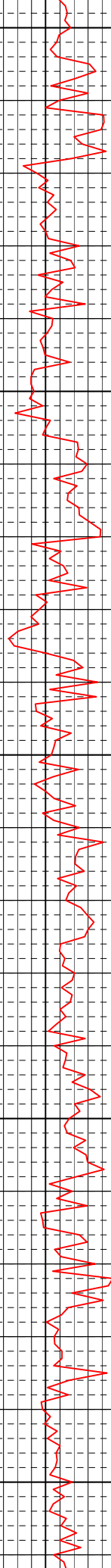
8250

8300

8350

WOB 5.3
RPM 111
SPM 88
SPP 2554

WOB 5.9
RPM 108
SPM 85
SPP 2671



8400
8450
8500
8550
8600

Carbide gas test at shaker

Carbide gas test from floor
6 bbls washout

MW IN 10.4
MW OUT 10.4

SH: lt gry - gry, sft - frm, blkly - amor, calc cmt/mtrx, dl, mod plty, wxy, Clst

SH: lt gry - gry, pred frm, sft, blkly, occ splin, calc cmt/mtrx, occ fl, dl, i.p. wxy, n fluor

SD: clr - mky - wh, uncons - p consol, f gr, sbrndd - rndd - sbang, fros, p srtg, calc cmt/mtrx, tr Calc incl, n fluor

SH: gry - lt gry, mod frm, i.p. sft, mod blkly, abd flk, abd splin, calc cmt/mtrx, dl, i.p. plty, tr pyr incl, tr fluor, dull yel, n cut, n por, n o/md fluor

SH: gry - lt gry, pred frm, occ sft, occ v sft, occ blkly, calc cmt/mtrx, dl, occ wxy, i.p. fl, occ plty, dull yel, n cut, n por, n o/md fluor

SH: lt gry - gry, i.p. frm, mod sft, pred blkly, abd flk, i.p. splin, i.p. plty, n fluor, n por, dull yel, n cut, n por, n o/md fluor

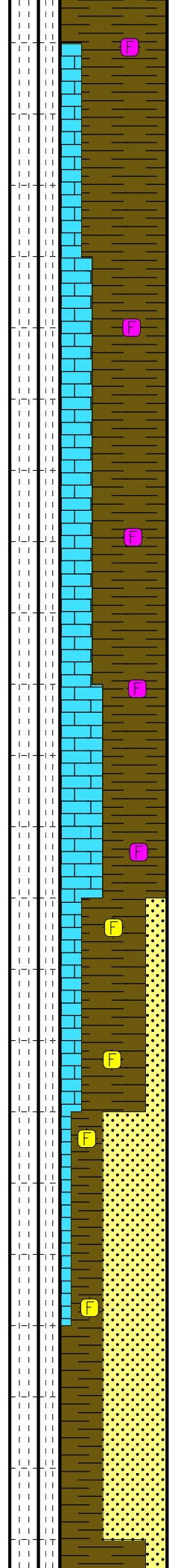
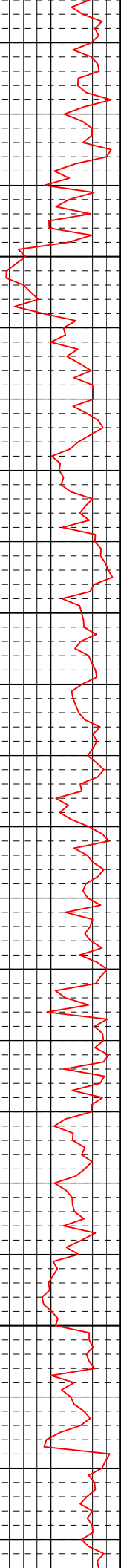
SH: lt gry - gry, occ sft, i.p. frm, pred blkly, abd flk, abd splin, calc cmt/mtrx, dl, 20% fluor, dull yel, n cut, n por, n o/md fluor

SH: gry - lt gry, pred frm, occ sft, occ v frm, occ blkly, calc cmt/mtrx, dl, occ

MW IN 10.4
MW OUT 10.4

9/27/2019

WOB 5.9
RPM 112
SPM 85
SPP 2563



8650

8700

8750

8800

Shaker #1 down
Swapped trap to #2

Calibration Gas

MG 73u

MW IN 10.4
MW OUT 10.4

wxy, fl, plty, dull yel, n cut, n por, n o/md fluor

SH: gry - lt gry, mod frm, i.p. sft, mod blk, abd flk, abd spln, calc cmt/mtrx, dl, i.p. plty, tr pyr incl, 20% fluor, dull yel, n cut, n por, n o/md fluor

LS: wkst - mdst, gry - tn - crm, i.p. frm, occ hd, f xln - microxln, dl - ea, arg, 20% fluor, dull yel, n por, n o/md fluor

SH: lt gry - gry, occ sft, i.p. frm, pred blk, abd flk, abd spln, calc cmt/mtrx, dl, 30% fluor, dull yel, n cut, n por, n o/md fluor

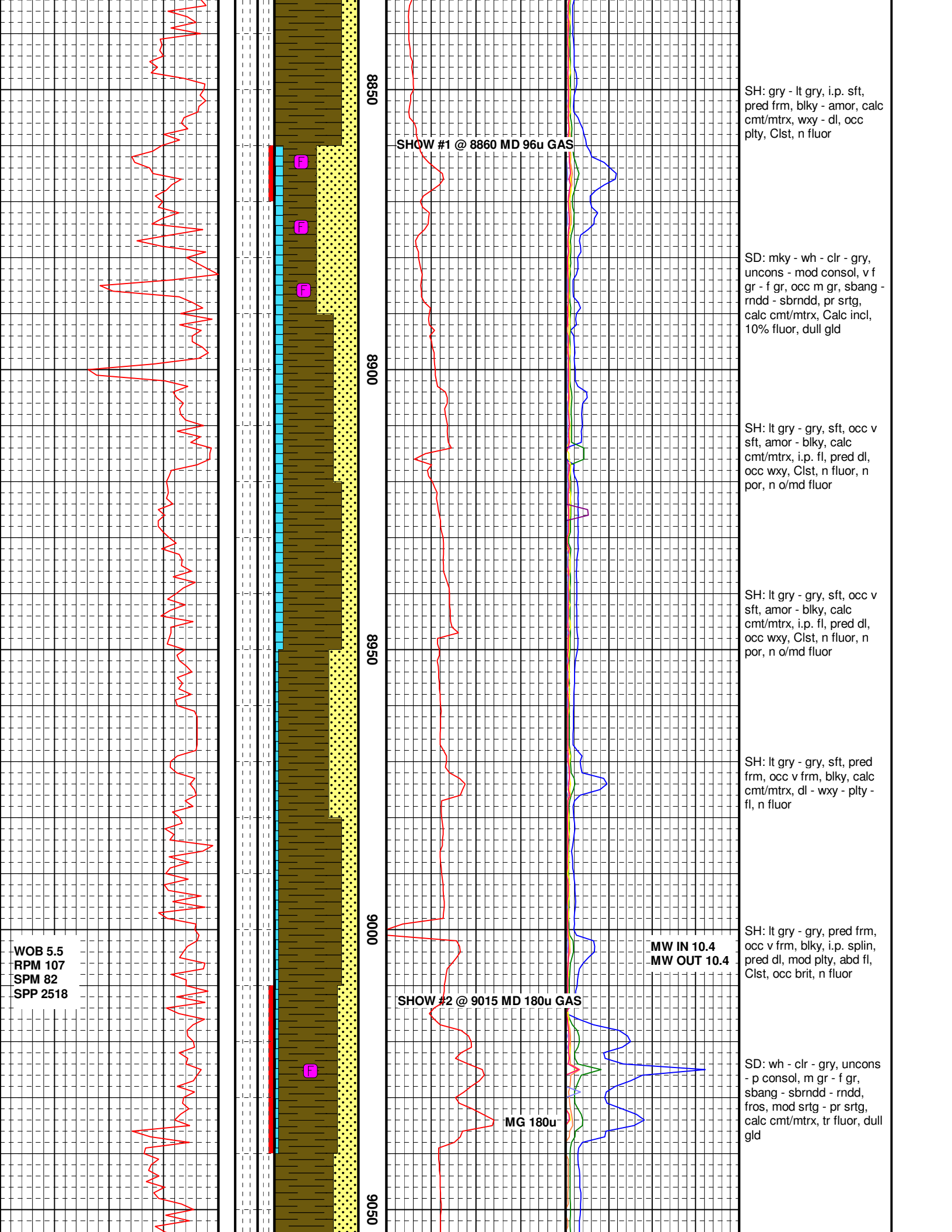
SH: lt gry - gry, pred frm, i.p. v frm, blk, calc cmt/mtrx, dl - wxy, i.p. brit, 30% fluor, dull yel, n por, n o/md fluor

SH: lt gry - gry, pred frm, abd sft, i.p. v frm, blk, calc cmt/mtrx, dl, abd brit, 30% fluor, dull yel, n por, n o/md fluor

SD: clr - mky - wh, p consol - consol, pred f gr, occ m gr, i.p. v f gr, sbang - sbrndd, pr srtg - mod srtg, calc cmt/mtrx, Calc incl, 30% fluor, dull yel

SD: wh - clr - gry, uncons - p consol, m gr - f gr, sbang - sbrndd - rndd, fros, mod srtg - pr srtg, calc cmt/mtrx, 20% fluor, brt yel-gld

SH: lt gry - gry, frm - sft, occ v sft, amor, calc cmt/mtrx, dl, mod plty, i.p. fl, occ wxy, tr fluor, brt yel



09500

SHOW #1 @ 8860 MD 96u GAS

SH: gry - lt gry, i.p. sft, pred frm, blkly - amor, calc cmt/mtrx, wxy - dl, occ plty, Clst, n fluor

00680

SD: mky - wh - clr - gry, uncons - mod consol, v f gr - f gr, occ m gr, sbang - rndd - sbrndd, pr srtg, calc cmt/mtrx, Calc incl, 10% fluor, dull gld

09680

SH: lt gry - gry, sft, occ v sft, amor - blkly, calc cmt/mtrx, i.p. fl, pred dl, occ wxy, Clst, n fluor, n por, n o/md fluor

09000

SHOW #2 @ 9015 MD 180u GAS

MW IN 10.4
MW OUT 10.4

SH: lt gry - gry, sft, occ v sft, amor - blkly, calc cmt/mtrx, i.p. fl, pred dl, occ wxy, Clst, n fluor, n por, n o/md fluor

SH: lt gry - gry, sft, pred frm, occ v frm, blkly, calc cmt/mtrx, dl - wxy - plty - fl, n fluor

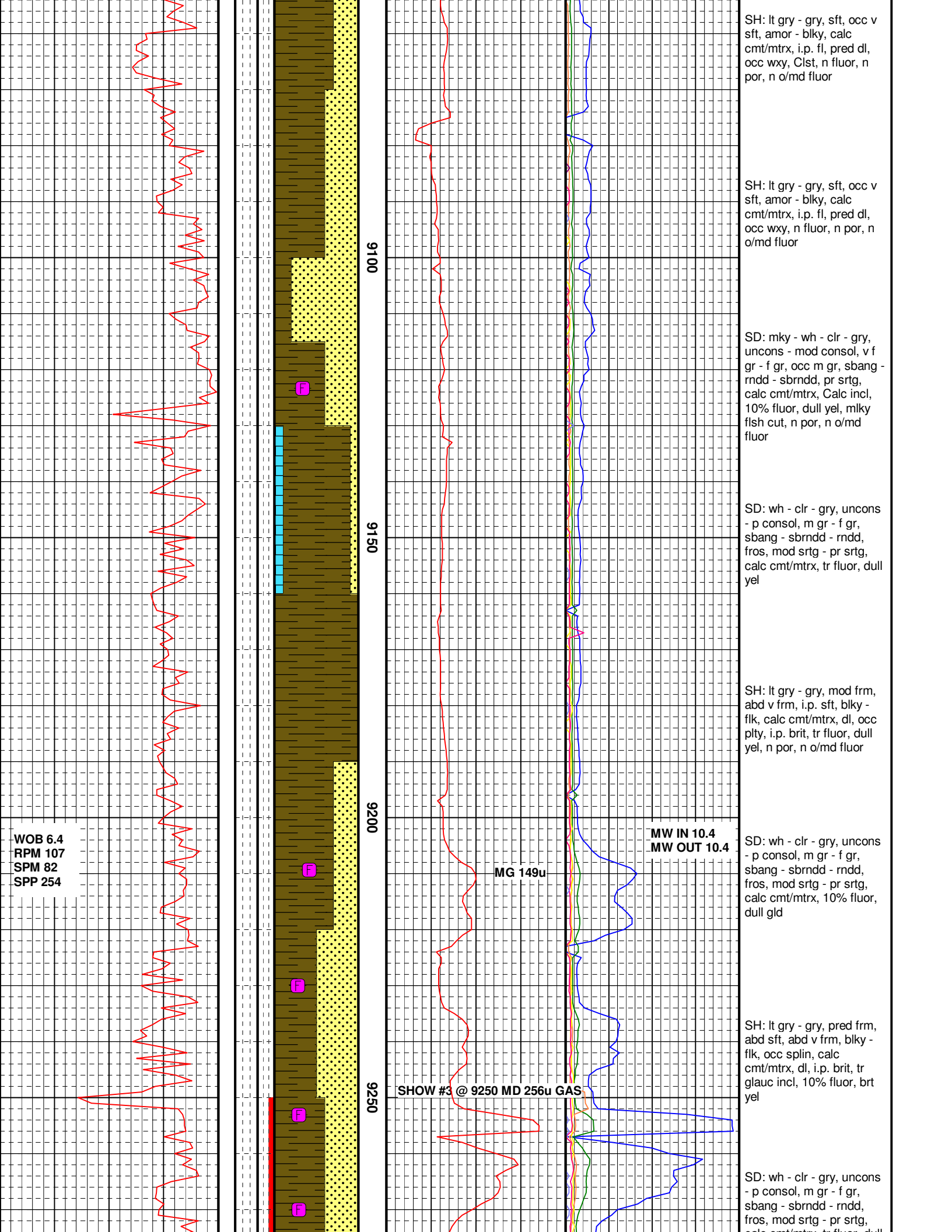
SH: lt gry - gry, pred frm, occ v frm, blkly, i.p. splin, pred dl, mod plty, abd fl, Clst, occ brit, n fluor

09050

MG 180u

SD: wh - clr - gry, uncons - p consol, m gr - f gr, sbang - sbrndd - rndd, fros, mod srtg - pr srtg, calc cmt/mtrx, tr fluor, dull gld

WOB 5.5
RPM 107
SPM 82
SPP 2518



WOB 6.4
 RPM 107
 SPM 82
 SPP 254

9100

9150

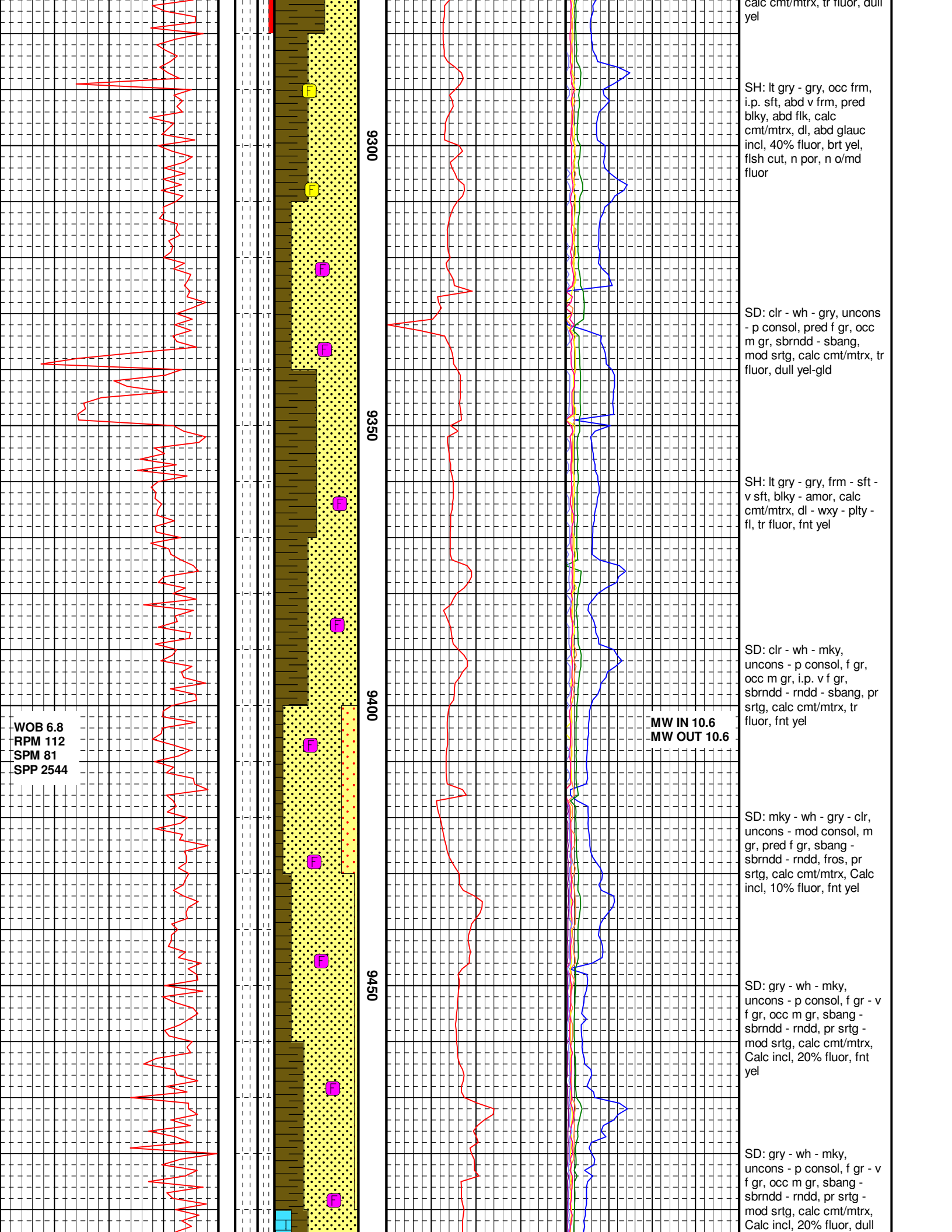
9200

9250

MG 149u

MW IN 10.4
 MW OUT 10.4

SHOW #3 @ 9250 MD 256u GAS



WOB 6.8
RPM 112
SPM 81
SPP 2544

MW IN 10.6
MW OUT 10.6

calc cmt/mtrx, tr fluor, dull yel

SH: lt gry - gry, occ frm, i.p. sft, abd v frm, pred blk, abd flk, calc cmt/mtrx, dl, abd glauc incl, 40% fluor, brt yel, fish cut, n por, n o/md fluor

SD: clr - wh - gry, uncons - p consol, pred f gr, occ m gr, sbrndd - sbang, mod srtg, calc cmt/mtrx, tr fluor, dull yel-gld

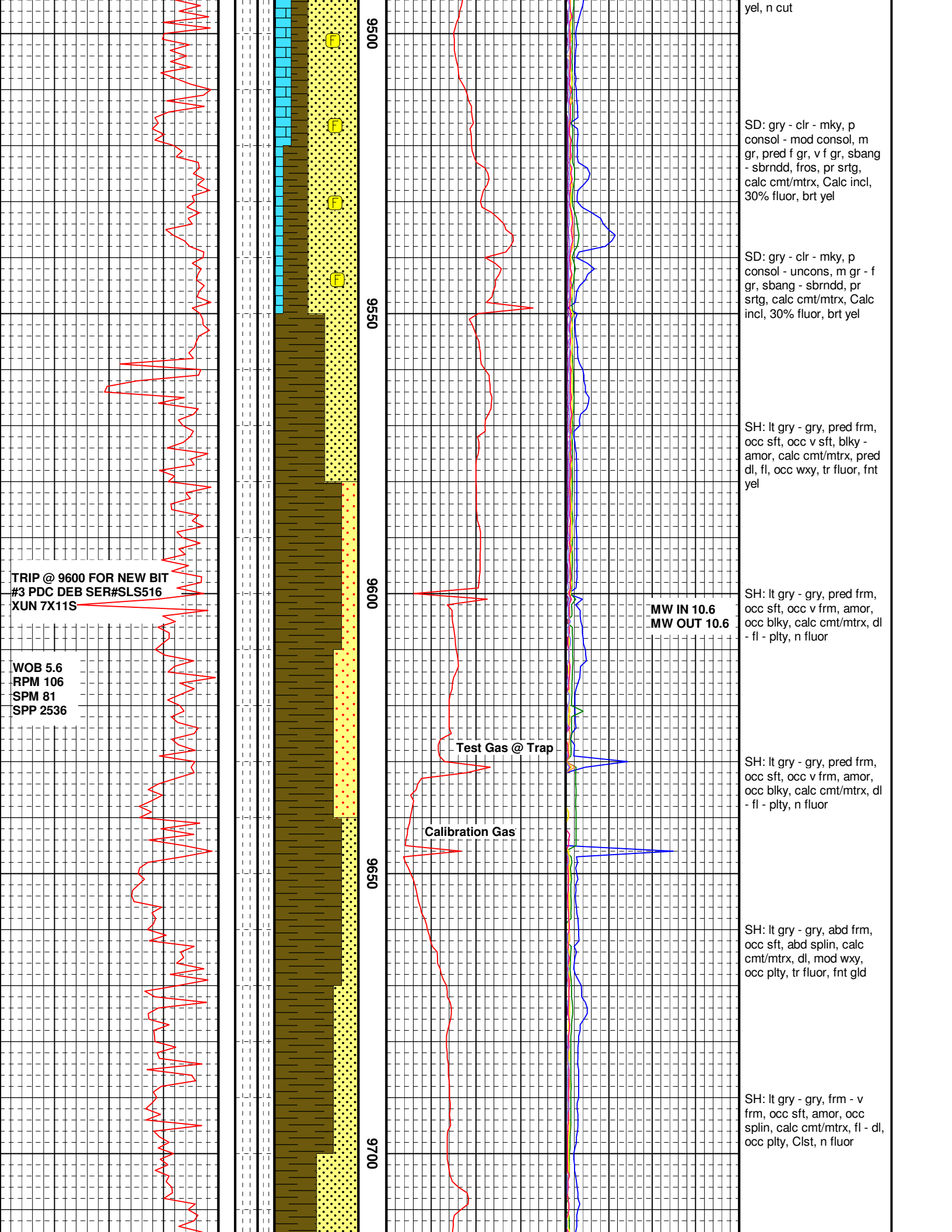
SH: lt gry - gry, frm - sft - v sft, blk - amor, calc cmt/mtrx, dl - wxy - plty - fl, tr fluor, fnt yel

SD: clr - wh - mky, uncons - p consol, f gr, occ m gr, i.p. v f gr, sbrndd - rndd - sbang, pr srtg, calc cmt/mtrx, tr fluor, fnt yel

SD: mky - wh - gry - clr, uncons - mod consol, m gr, pred f gr, sbang - sbrndd - rndd, fros, pr srtg, calc cmt/mtrx, Calc incl, 10% fluor, fnt yel

SD: gry - wh - mky, uncons - p consol, f gr - v f gr, occ m gr, sbang - sbrndd - rndd, pr srtg - mod srtg, calc cmt/mtrx, Calc incl, 20% fluor, fnt yel

SD: gry - wh - mky, uncons - p consol, f gr - v f gr, occ m gr, sbang - sbrndd - rndd, pr srtg - mod srtg, calc cmt/mtrx, Calc incl, 20% fluor, dull



yel, n cut

SD: gry - clr - mky, p
 consol - mod consol, m
 gr, pred f gr, v f gr, sbang
 - sbrnnd, fros, pr srtg,
 calc cmt/mtrx, Calc incl,
 30% fluor, brt yel

SD: gry - clr - mky, p
 consol - uncons, m gr - f
 gr, sbang - sbrnnd, pr
 srtg, calc cmt/mtrx, Calc
 incl, 30% fluor, brt yel

SH: lt gry - gry, pred frm,
 occ sft, occ v sft, blkly -
 amor, calc cmt/mtrx, pred
 dl, fl, occ wxy, tr fluor, fnt
 yel

SH: lt gry - gry, pred frm,
 occ sft, occ v frm, amor,
 occ blkly, calc cmt/mtrx, dl
 - fl - plty, n fluor

SH: lt gry - gry, pred frm,
 occ sft, occ v frm, amor,
 occ blkly, calc cmt/mtrx, dl
 - fl - plty, n fluor

SH: lt gry - gry, abd frm,
 occ sft, abd splin, calc
 cmt/mtrx, dl, mod wxy,
 occ plty, tr fluor, fnt gld

SH: lt gry - gry, frm - v
 frm, occ sft, amor, occ
 splin, calc cmt/mtrx, fl - dl,
 occ plty, Clst, n fluor

TRIP @ 9600 FOR NEW BIT
 #3 PDC DEB SER#SLS516
 XUN 7X11S

WOB 5.6
 RPM 106
 SPM 81
 SPP 2536

MW IN 10.6
 MW OUT 10.6

Test Gas @ Trap

Calibration Gas

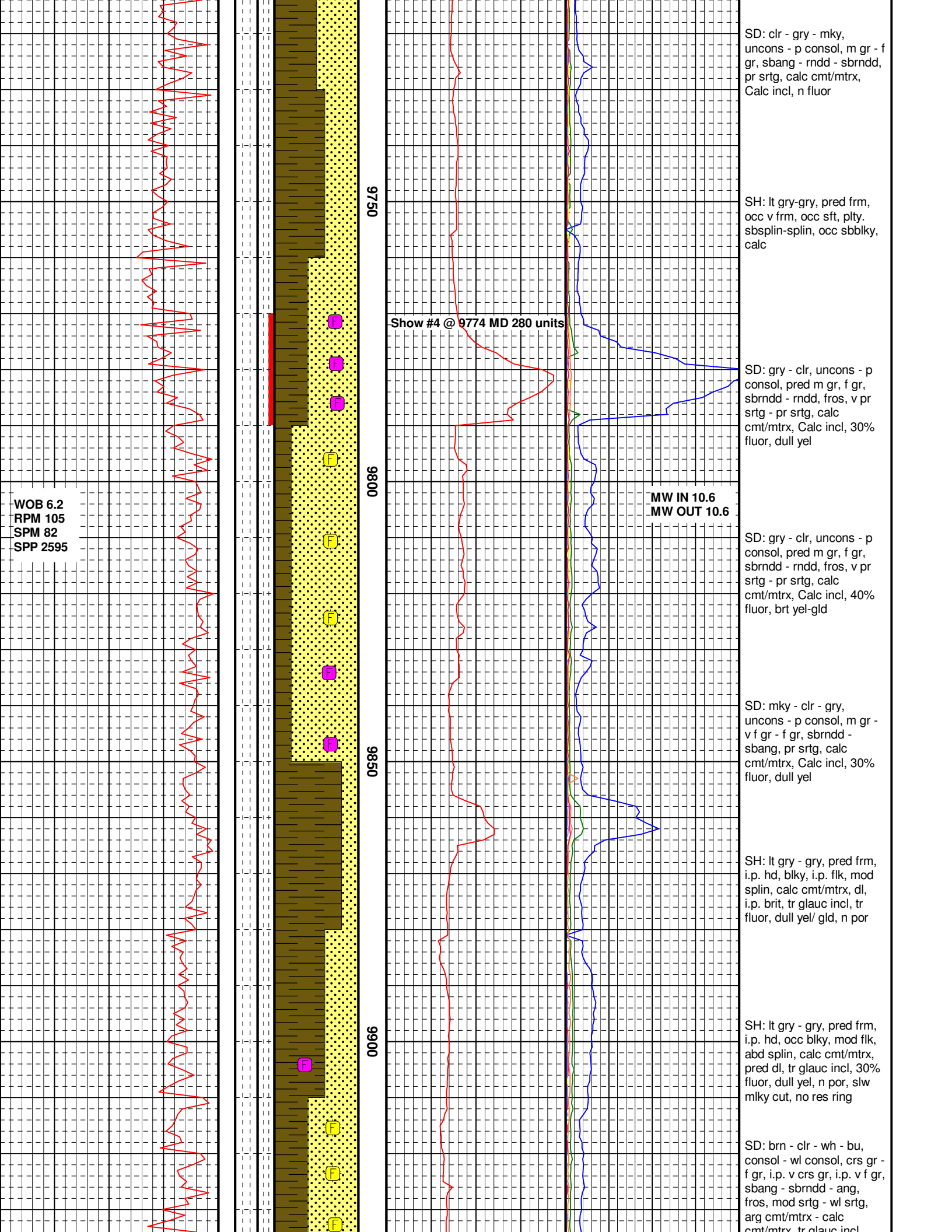
9500

9550

9600

9650

9700



SD: clr - gry - mky,
uncons - p consol, m gr - f
gr, sbang - rndd - sbrndd,
pr srtg, calc cmt/mtrx,
Calc incl, n fluor

SH: lt gry-gry, pred frm,
occ v frm, occ sft, plty.
sbsplin-splin, occ sbbky,
calc

SD: gry - clr, uncons - p
consol, pred m gr, f gr,
sbrndd - rndd, fros, v pr
srtg - pr srtg, calc
cmt/mtrx, Calc incl, 30%
fluor, dull yel

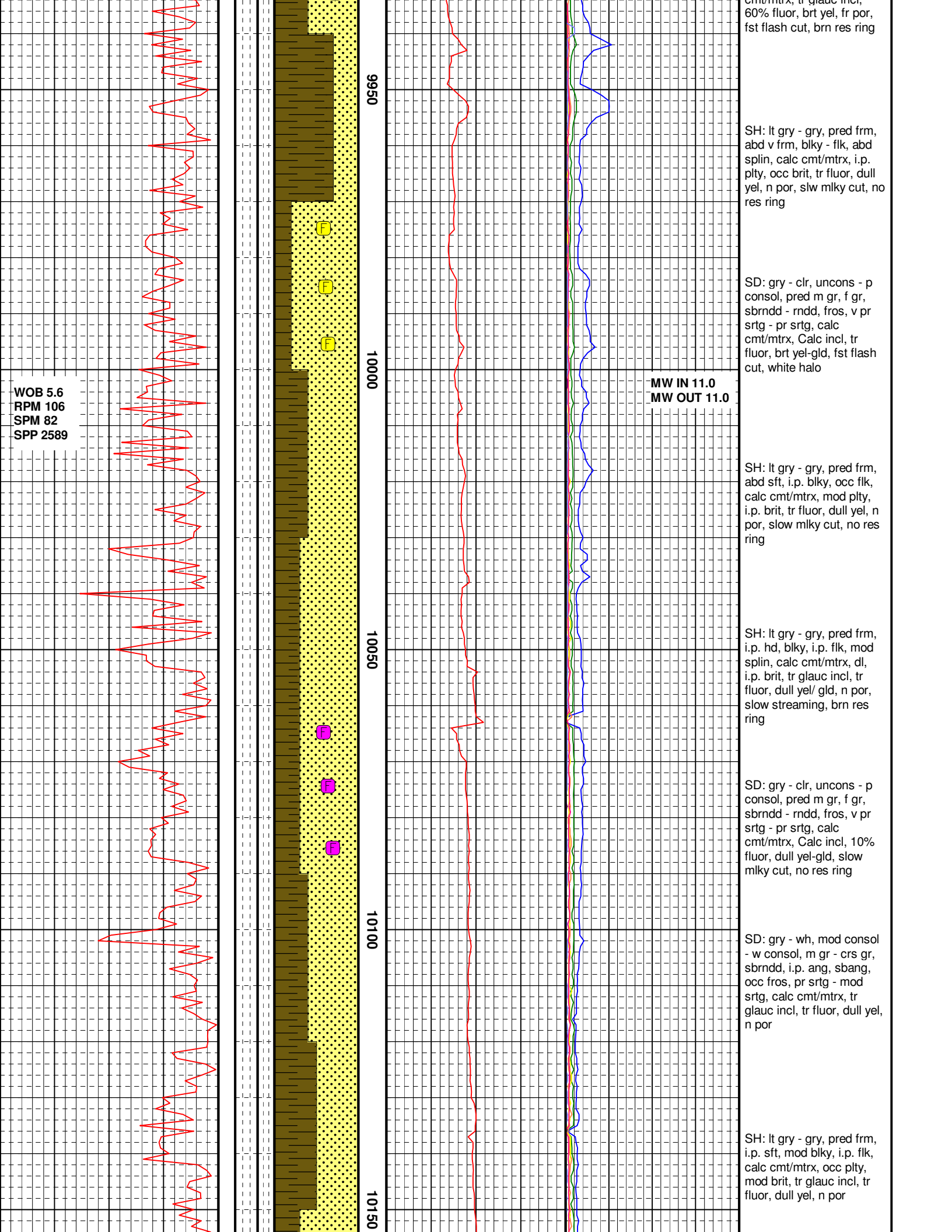
SD: gry - clr, uncons - p
consol, pred m gr, f gr,
sbrndd - rndd, fros, v pr
srtg - pr srtg, calc
cmt/mtrx, Calc incl, 40%
fluor, brt yel-gld

SD: mky - clr - gry,
uncons - p consol, m gr -
v f gr - f gr, sbrndd -
sbang, pr srtg, calc
cmt/mtrx, Calc incl, 30%
fluor, dull yel

SH: lt gry - gry, pred frm,
i.p. hd, blk, i.p. flk, mod
splin, calc cmt/mtrx, dl,
i.p. brit, tr glauc incl, tr
fluor, dull yel/ gld, n por

SH: lt gry - gry, pred frm,
i.p. hd, occ blk, mod flk,
abd splin, calc cmt/mtrx,
pred dl, tr glauc incl, 30%
fluor, dull yel, n por, slw
mlky cut, no res ring

SD: brn - clr - wh - bu,
consol - wl consol, crs gr -
f gr, i.p. v crs gr, i.p. v f gr,
sbang - sbrndd - ang,
fros, mod srtg - wl srtg,
arg cmt/mtrx - calc
cmt/mtrx, tr glauc incl

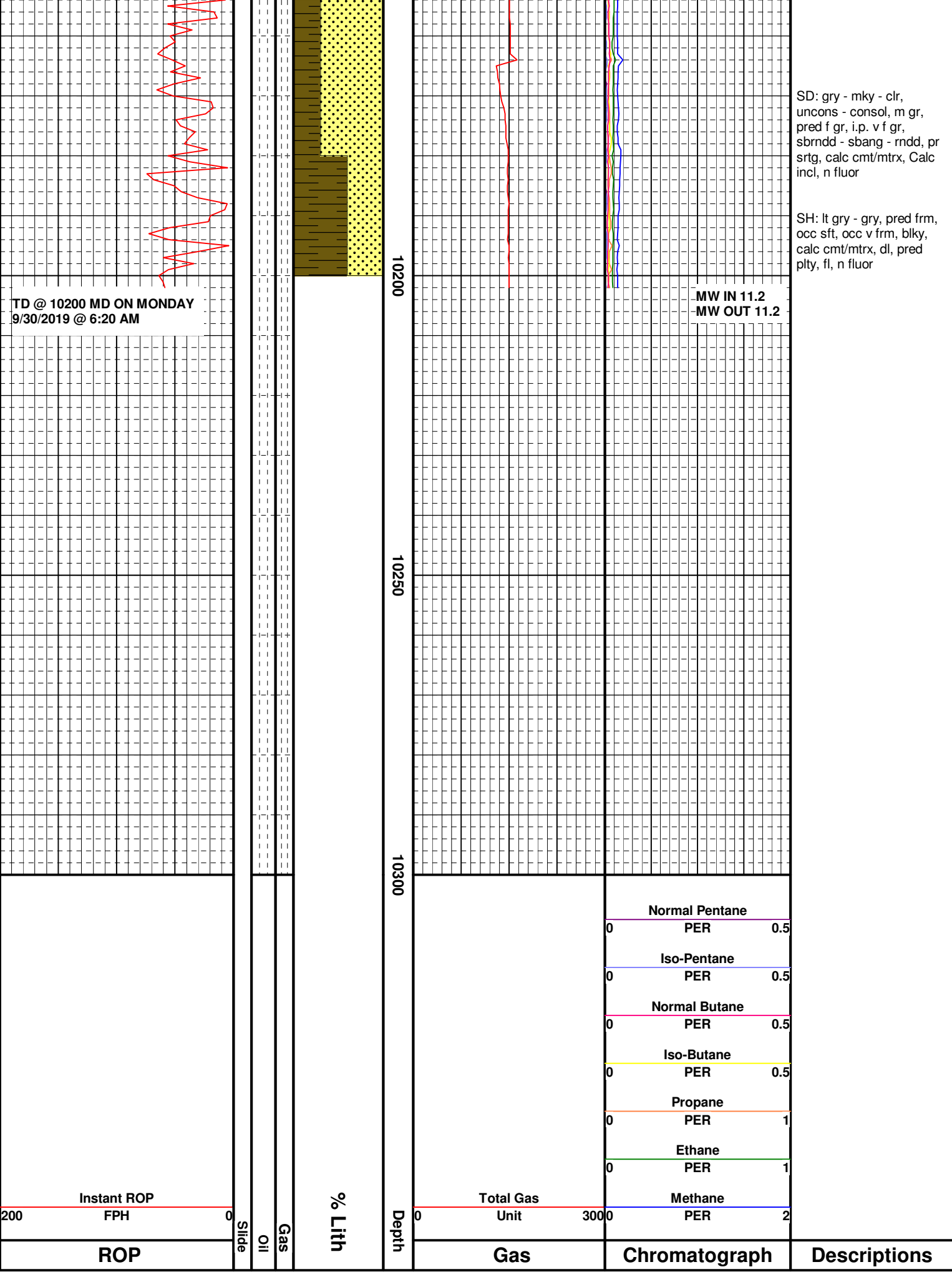


SD: gry - mky - clr,
 uncons - consol, m gr,
 pred f gr, i.p. v f gr,
 sbrnrd - sbang - rndd, pr
 srtg, calc cmt/mtrx, Calc
 incl, n fluor

SH: lt gry - gry, pred frm,
 occ sft, occ v frm, blk,
 calc cmt/mtrx, dl, pred
 plty, fl, n fluor

TD @ 10200 MD ON MONDAY
 9/30/2019 @ 6:20 AM

MW IN 11.2
 MW OUT 11.2



200 Instant ROP FPH

10200

10250

10300

Depth

ROP

Slide

Oil

Gas

% Lith

Total Gas Unit

Gas

Chromatograph

Descriptions

0	Normal Pentane	0.5
0	PER	0.5
0	Iso-Pentane	0.5
0	PER	0.5
0	Normal Butane	0.5
0	PER	0.5
0	Iso-Butane	0.5
0	PER	0.5
0	Propane	1
0	PER	1
0	Ethane	1
0	PER	1
0	Methane	2
0	PER	2